

Salt Removal - Buffer Exchange

MicroDialysis, Equilibrium Dialysis, and Electroelution

Biodialyzer Advantages:

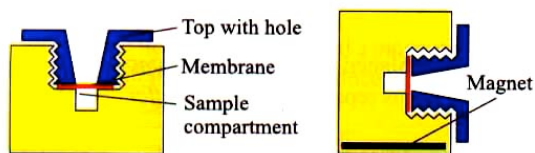
The unique Biodialyzer™ microdialysis system for the dialysis of small sample volumes has many applications. Made of Teflon®, a totally inert, biocompatible, and autoclaveable material, sample volumes can be as low as 10µL. The biodialyzer family consists of more than 50 different types of systems which can be joined together in hundreds of combinations for various applications, including equilibrium dialysis and electroelution.

- Autoclaveable
 - Easy to Use
 - Fast
 - High Recovery
- Inert
 - Leak proof
 - Teflon chambers
 - 10-5000 µl

Biodialyzer

Single-Sided Biodialyzer:

Single-sided Biodialyzers are ideal for the simple dialysis of salts, exchange of buffers, and concentration of samples. Single-Sided Biodialyzers are made in various sizes from 10µL to 5,000µL. They are available with or without a built-in magnet. The rate of dialysis is faster by 50-100% when using a dialyzer with a built-in magnet. Alternatively, dialyzers without the built-in magnet can be used by placing a magnetic stir bar into a beaker.

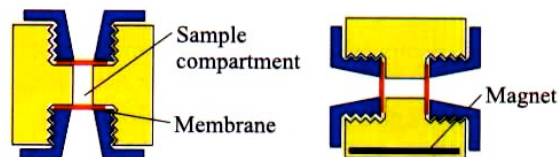


Single-Sided Biodialyzer

Single-Sided Magnetic Biodialyzer

Double-Sided Biodialyzer:

Double-Sided Biodialyzers can be used for simple dialysis as well as Electroelution, Electroconcentration, Electro Dialysis, and Equilibrium Dialysis. These dialyzers have membranes at both ends of the chamber rather than at just one end. The sample goes between the two membranes, where it can use the surface area of both membranes, thus allowing faster dialysis.



Double-Sided Biodialyzer

Double-Sided Magnetic Biodialyzer

Concentration of Samples

Once dialysis is completed, the Biodialyzer can be placed in a vacuum chamber (e.g. desiccator or vacuum concentrator centrifuge without running the centrifuge). On applying the vacuum, the water vapors will diffuse through the membrane and the sample will concentrate on the Teflon bottom. Concentration by this method is superior to the centrifugal method. In the centrifugal method, the sample is concentrated on the membrane and due to the centrifugal force, the sample sometimes passes through the membrane or sticks to its surface.

The concentration of samples in a Double-Sided Biodialyzer is the same as in a Single-Sided Biodialyzer. However, the Teflon screw and membrane on one side should be replaced with a Teflon screw without a hole. The sample will then be concentrated on the Teflon surface.

Biodialyzer Part Numbers and Pricing:

Volume	Sngl Side w/o magnet	Sngl Side w/ magnet	Dbl Side w/o magnet	Dbl Side w/ magnet
10µL	SSB0010	SSM0010		
20µL	SSB0020	SSM0020		
50µL	SSB0050	SSM0050	SSA0050	SSN0050
100µL	SSB0100	SSM0100	SSA0100	SSN0100
200µL	SSB0200	SSM0200	SSA0200	SSN0200
500µL	SBB0500	SSM0500	SSA0500	SSN0500
1,000µL	SSB1000	SSM1000	SSA1000	SSN1000
1,500µL	SSB1500	SSM1500	SSA1500	SSN1500
3,000µL	SSB3000		SSA3000	
5,000µL	SSB5000		SSA5000	
Price 5/pk	\$328.00	\$415.00	\$437.00	\$552.00

Volume	Sngl Side w/o magnet	Sngl Side w/ magnet	Dbl Side w/o magnet	Dbl Side w/ magnet
10µL	SSB0010.1	SSM0010.1		
20µL	SSB0020.1	SSM0020.1		
50µL	SSB0050.1	SSM0050.1	SSA0050.1	SSN0050.1
100µL	SSB0100.1	SSM0100.1	SSA0100.1	SSN0100.1
200µL	SSB0200.1	SSM0200.1	SSA0200.1	SSN0200.1
500µL	SBB0500.1	SSM0500.1	SSA0500.1	SSN0500.1
1,000µL	SSB1000.1	SSM1000.1	SSA1000.1	SSN1000.1
1,500µL	SSB1500.1	SSM1500.1	SSA1500.1	SSN1500.1
3,000µL	SSB3000.1		SSA3000.1	
5,000µL	SSB5000.1		SSA5000.1	
Price 1/pk	\$82.00	\$114.00	\$109.00	\$136.00

The Nest Group, Inc.

45 Valley Road, Southboro, MA 01772-1323

TEL# 800-347-6378 or TEL# 508-481-6223

<http://www.nestgrp.com>

FAX# 508-485-5736

email: info@nestgrp.com

Membranes and Electroelution

Cellulose Acetate Membranes

MWCO	10-200 μ L	500-1,500 μ L	3,000-5,000 μ L
100 Daltons	SA001K	SB001K	SC001K
500 Daltons	SA005K	SB005K	SC005K
1 KDa	SA010K	SB010K	SC010K
2 KDa	SA020K	SB020K	SC020K
5 KDa	SA050K	SB050K	SC050K
10 KDa	SA100K	SB100K	SC100K
25 KDa	SA250K	SB250K	SC250K
50 KDa	SA500K	SB500K	SC500K
100 KDa	SA111K	SB111K	SC111K
Price 24/pk	\$39.00	\$58.00	\$82.00
Price 96/pk	\$123.00	\$184.00	\$222.00

Regenerated Cellulose Membranes

MWCO	10-200 μ L	500-1,500 μ L	3,000-5,000 μ L
1 KDa	SA010S	SB010S	SC010S
2 KDa	SA020S	SB020S	SC020S
5 KDa	SA050S	SB050S	SC050S
10 KDa	SA100S	SB100S	SC100S
25 KDa	SA250S	SB250S	SC250S
50 KDa	SA500S	SB500S	SC500S
Price 24/pk	\$39.00	\$58.00	\$82.00
Price 96/pk	\$123.00	\$184.00	\$222.00

*Match membrane volume to the volume of the biodialyzer.

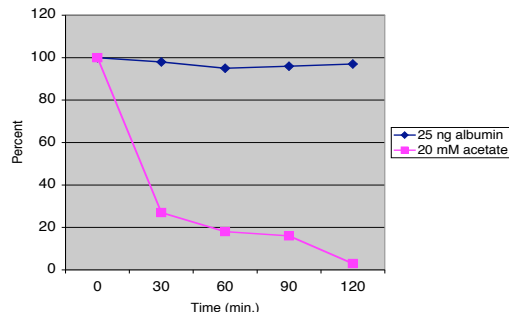
Polycarbonate Membranes

Pore Size	10-200 μ L	500-1,500 μ L	3,000-5,000 μ L
0.01 μ	SA0001P	SB0001P	SC0001P
0.05 μ	SA0005P	SB0005P	SC0005P
0.6 μ	SA0060P	SB0060P	SC0060P
Price 24/pk	\$39.00	\$58.00	\$82.00
Price 96/pk	\$123.00	\$184.00	\$222.00

Ultra-Thin Membranes

Part #	Description	96-Pack	24-Pack
SA050D	5KDa (10-200 μ l)	\$139.00	\$44.00
SA100D	10KDa (10-200 μ l)	\$139.00	\$44.00
SB050D	5KDa (0.5-1.5 ml)	\$195.00	\$54.00
SB100D	10KDa (0.5-1.5 ml)	\$195.00	\$54.00

Rate of Salt Removal (10 Kda MWCO membrane)

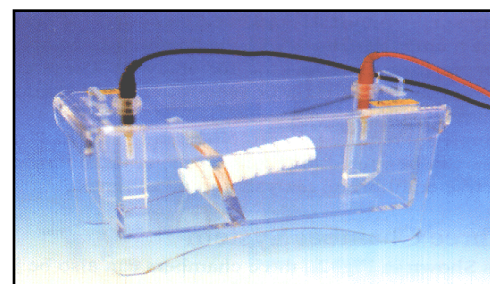


Electro-Elutor

Electro-Elutor for SDS removal or recovery of sample from gel slices:

The general method is to put a gel slice in an appropriately sized chamber (e.g. 250 μ L or larger) and add an equal volume of 10 mM buffer. In an electric field, proteins tend to linearize so a membrane will allow fast migration in a 5-10 mA current. At the cathode end use any membrane MWCO. At the outlet end towards the anode, use a membrane larger than the protein. At the end of the second or third chamber, have a membrane smaller than the protein by a factor of 2-3. Thus at the very end use a 500 Da or 1 KDa membrane which should allow SDS out and retain the protein. Using a smaller (e.g. 100 μ L) second chamber, will concentrate the protein. While one could use an even smaller chamber, be sure there is no air in it otherwise the current will go up and there is a risk of heating the sample. Processing time is only 5-10 minutes per sample

Part #	Description	Price
SR0002	Tank Only	\$424.00
SSA 0050	Biodialyzer, Double-Sided w/o Magnetic (50 μ l) – 5/pk Also available in 100, 200, 500, 1000, 1500, 3000, 5000 μ l sizes	\$437.00
SSA 0050.1	Biodialyzer, Double-Sided w/o Magnetic (50 μ l) – 1/pk Also available in 100, 200, 500, 1000, 1500, 3000, 5000 μ l sizes	\$109.00
SER 0025.5	Link Chamber, 25 μ l – 5/pk Also available in 50, 100, 250, 500 μ l sizes	\$271.00
SER 0025.1	Link Chamber, 25 μ l – 1/pk (Also links 50-100 μ l and 250-500 μ l) Also available in 50, 100, 250, 500 μ l sizes	\$71.00
SER 10-200.1	Union, Joins volumes 10 to 200 μ l, 350 μ L, 1 each	\$39.00
SER 50-500.1	Union, Joins volumes 50-200 μ l to 500/1500 μ l, 1.5mL, 1 each	\$39.00
SER 500-1500.1	Union, Joins volumes 500 μ l to 1500 μ l, 2.5mL, 1 each	\$39.00
SR1113	O-Rings for Tank, 3/pk	\$17.00



Choose membranes MWCO and diameter from above.

The Nest Group, Inc.

45 Valley Road, Southboro, MA 01772-1323

TEL#800-347-6378 or TEL# 508-481-6223

<http://www.nestgrp.com>

FAX# 508-485-5736

email: info@nestgrp.com

Disposable Dialyzers

Dispo-Biodialyzers

The Dispo-Biodialyzer family offers an easy-to-use dialysis system for small samples.

Dispo-Biodialyzer: 10 μ L to 100 μ L

- 100% Recovery by centrifugation
- Disposable Dialysis System
- MWCO Membranes 100 Da to 50 KDa
- **Kit Includes:** Dialyzer, Eppendorf recovery tube, sample applicator, cap and float



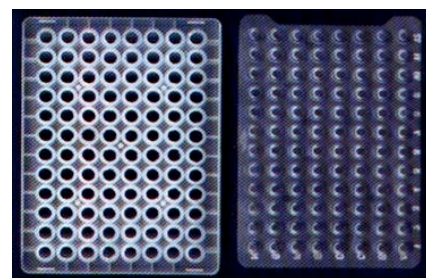
Dispo-Biodialyzer: 1mL to 10mL

- Disposable Dialysis System
- MWCO 10 KDa
- Ultra thin 10 KDa membrane for fast dialysis
- **Kit Includes:** Dialyzer housing and two membranes each



96-Well Biodialyzer: 25 μ L to 300 μ L

- 96-Well Format
- Ultra-thin Membrane
- MWCO 1-25 KDa
- High well-to-well reproducibility
- **Kit Includes:** Dialyzer and silicon mat



Equilibrium Dispo-Biodialyzer: (Single Pair)

- MWCO 5 and 10 KDa
- **Kit Includes:** 75 μ l dialyzer housing, membrane, and two caps.

Dispo-Biodialyzer Part Numbers and Pricing

Dispo-Biodialyzer Volume 10 to 100 μ L

Part #	MWCO	Qty/Pk	Price
SDIS 001J	100 Da	25	\$106.00
SDIS 001K	100 Da	50	\$167.00
SDIS 001M	100 Da	100	\$307.00
SDIS 005J	500 Da *	25	\$106.00
SDIS 005K	500 Da *	50	\$167.00
SDIS 005M	500 Da *	100	\$307.00
SDIS 010J	1 KDa	25	\$106.00
SDIS 010K	1 KDa	50	\$167.00
SDIS 010M	1 KDa	100	\$307.00
SDIS 020J	2 KDa	25	\$106.00
SDIS 020K	2 KDa	50	\$167.00
SDIS 020M	2 KDa	100	\$307.00
SDIS 050J	5 KDa	25	\$106.00
SDIS 050K	5 KDa	50	\$167.00
SDIS 050M	5 KDa	100	\$307.00
SDIS 100J	10 KDa **	25	\$106.00
SDIS 100K	10 KDa **	50	\$167.00
SDIS 100M	10 KDa **	100	\$307.00
SDIS 250J	25 KDa	25	\$106.00
SDIS 250K	25 KDa	50	\$167.00
SDIS 250M	25 KDa	100	\$307.00
SDIS 500J	50 KDa	25	\$106.00
SDIS 500K	50 KDa	50	\$167.00
SDIS 500M	50 KDa	100	\$307.00

*500 Da membranes for carbohydrate desalting

**10 KDa MWCO membranes are ultra thin for 1-hour dialysis

Dispo-Biodialyzer Volume 1 to 10mL

Part #	MWCO	Qty/Pk	Price
SDIS 0525K	5 KDa	25	\$145.00
SDIS 0550K	5 KDa	50	\$272.00
SDIS 0510K	5 KDa	100	\$502.00
SDIS 1025K	10 KDa	25	\$145.00
SDIS 1050K	10 KDa	50	\$272.00
SDIS 1010K	10 KDa	100	\$502.00

96-Well Dispo-Biodialyzer 25 μ L to 300 μ L

Part #	MWCO	Qty/Pk	Price
SDIS 9601	1 KDa	2	\$317.00
SDIS 9602	2 KDa	2	\$317.00
SDIS 9605	5 KDa	2	\$317.00
SDIS 9610	10 KDa	2	\$317.00
SDIS 9625	25 KDa	2	\$317.00

Equilibrium Dispo-Biodialyzer (Single Pair) 75 μ L

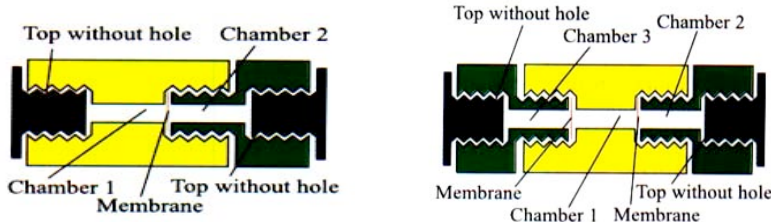
Part #	MWCO	Qty/Pk	Price
SDIS 050JE	5 KDa	25	\$82.00
SDIS 050KE	5 KDa	50	\$136.00
SDIS 050ME	5 KDa	100	\$245.00
SDIS 100JE	5 KDa	25	\$82.00
SDIS 100KE	10 KDa	50	\$136.00
SDIS 100ME	10 KDa	100	\$245.00
SDIS 500ME	50 KDa	100	\$301.00
SDIS 1000ME	100 KDa	100	\$301.00

Equilibrium Dialysis

Equilibrium Biodialyzer

Advantages:

- Chamber volume as little as 50 μ L
- Selective equilibrium dialysis with different membranes
- Ideal for quick binding tests
- Third Chamber for internal reference available



Equilibrium Biodialyzer**

Part #	Description	5-Pack	1-Pack
SSE 0100	2 Chambers, 50 μ L ea.	\$546.00	\$136.00
SSE 0200	2 Chambers, 100 μ L ea.	\$546.00	\$136.00
SSE 0500	2 Chambers, 250 μ L ea.	\$546.00	\$136.00
SSE 1000	2 Chambers, 500 μ L ea.	\$546.00	\$136.00
SER 0050	3rd Chamber, 50 μ L ea.	\$271.00	\$71.00
SER 0100	3rd Chamber, 100 μ L ea.	\$271.00	\$71.00
SER 0250	3rd Chamber, 250 μ L ea.	\$271.00	\$71.00
SER 0500	3rd Chamber, 500 μ L ea.	\$271.00	\$71.00

**Uses Ultra-Thin membranes on Page 2.

96-Well Equilibrium Biodialyzer and Plate Rotators

Advantages:

- Individual membrane for each well
- Ultra-thin regenerated cellulose membranes
- High well-to-well reproducibility
- Excellent sample recovery

96-Well Equilibrium Dialyzer

Part #	Description	Price
SDIS 9605EN	Plate, 5KDa (1 each)	\$383.00
SDIS 9605EN.3	Plate, 5KDa (3 /pk)	\$1,080.00
SDIS 9605EN.10	Plate, 5KDa (10 /pk)	\$3,250.00
SDIS 9610EN	Plate, 10Kda (1 each)	\$383.00
SDIS 9610EN.3	Plate, 10Kda (3 /pk)	\$1,080.00
SDIS 9610EN.10	Plate, 10Kda (10 /pk)	\$3,250.00
SPLR 0000.1	Single Plate Rotator (1 each)	\$710.00
SPLR 0000	Dual Plate Rotator (1 each)	\$825.00
SPLR 0008C	Big Shot Carousel (8, 96-Well Plates)	\$460.00
SPLR 0008H	Big Shot Oven & Carousel, 110V	\$3,050.00

Multi Equilibrium Dialyzer

Part #	Description	Price
SED2000	20 Cells (1, 2, or 5ml), with 200 (5 or 10 KDa MWCO) membranes	\$8,044.00
SEDX400	Emptying Stoppers, 5/pk	\$94.00
SEDX500	Black Stoppers, 5/pk	\$60.00

Biodialyzer, Electro-Elutor, Dispo-Biodialyzer, 96-Well Biodialyzer, Dispo-Equilibrium Biodialyzer, Equilibrium Dialyzer, and 96-Well Equilibrium-Dialyzer are trademarks of Harvard Apparatus.
Teflon is a registered trademark of DuPont Co.
The Nest Group, Inc. 02.08.06 S2



96-Well Equilibrium Dispo-Dialyzer
NEW! Robot-compatible ASME standard size



Dual Plate Rotator



Multi-Equilibrium Dialyzer