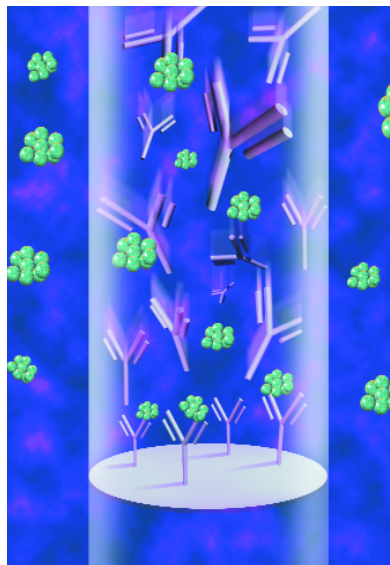


Vivapure Epoxy Protein Coupling Kit

Create your personal affinity matrix . . .

The Vivapure Epoxy Protein Coupling Kit provides a rapid, simple and convenient way of coupling your desired protein to the best solid phase in the most convenient device you can imagine: an epoxy membrane in a spin column.

Our epoxy membrane for protein coupling allows you to make the affinity matrix of your choice. In just over 3 hours you can couple, hence immobilize 0.2 - 0.5 mg of your protein such as an antibody, antigen, enzyme or receptor.



The Vivapure Advantage

- Complete kit – ready-to-go for making the affinity matrix of your choice
- Mild coupling conditions - no alternation of protein activity
- High stability of coupled proteins – stable covalent bonds
- Easy handling - short hands-on time due to spin columns
- Parallel sample handling - easy in a spin column format
- Fast results – Couple and purify in the same device

Target protein purification with Vivapure custom affinity spin columns

Figure 1 shows effective purification of BSA from bovine serum.

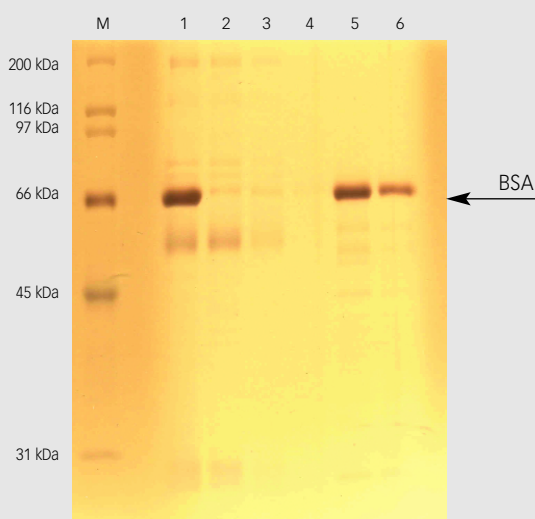


Figure 1. Silver-stained, reducing 12.5% Tris/HCl SDS gel showing affinity purification of BSA from bovine serum with a custom made anti-BSA matrix.

M: Molecular weight marker
 Lane 1: Original sample (bovine serum)
 Lanes 2, 3 & 4: Flow-through and wash fractions
 Lanes 5 & 6: Elution of purified BSA from custom made anti-BSA-affinity column (anti-BSA coupled to Vivapure epoxy device matrix)

Figure 2 shows specific purification of anti-human IgG: as expected, goat IgGs are found in the flow-through and wash fractions, while anti-human IgG is specifically purified (Lane 4 and 5) as confirmed by Western blotting (data not shown).

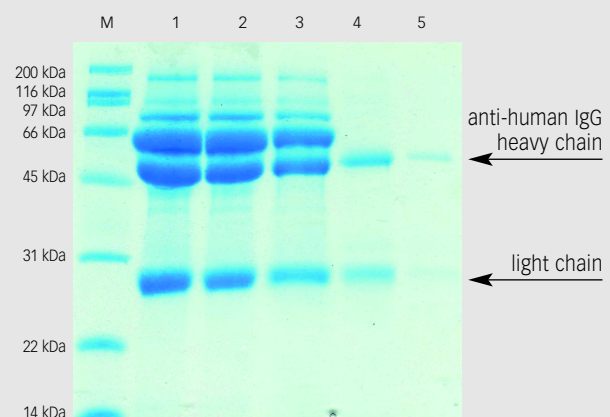


Figure 2. Coomassie-stained, reducing 12.5% Tris/HCl SDS gel showing affinity purification of anti-human IgG from goat serum (of goats immunized with human IgG) with a custom made human IgG matrix.

M: Molecular weight marker
 Lane 1: Original goat serum sample
 Lanes 2 & 3: Flow-through and wash fraction (serum proteins and goat IgG)
 Lanes 4 & 5: Elution of purified anti-human IgG from custom made human IgG-affinity column (human IgG coupled to Vivapure epoxy device matrix)

For further details of these particular experiments, please refer to the application note at www.vivascience.com

... purify your desired protein

Fast protein coupling

Vivapure Epoxy Mini spin columns provide a membrane to which any desired protein, containing amino-, sulfhydryl-, or hydroxyl-groups on its surface is coupled covalently. Optimized coupling buffers assure efficient coupling results. The special formulation of the membrane requires no lengthy blocking steps after the coupling reaction: resulting in faster affinity column preparation for faster purification results.



Optimal screening device

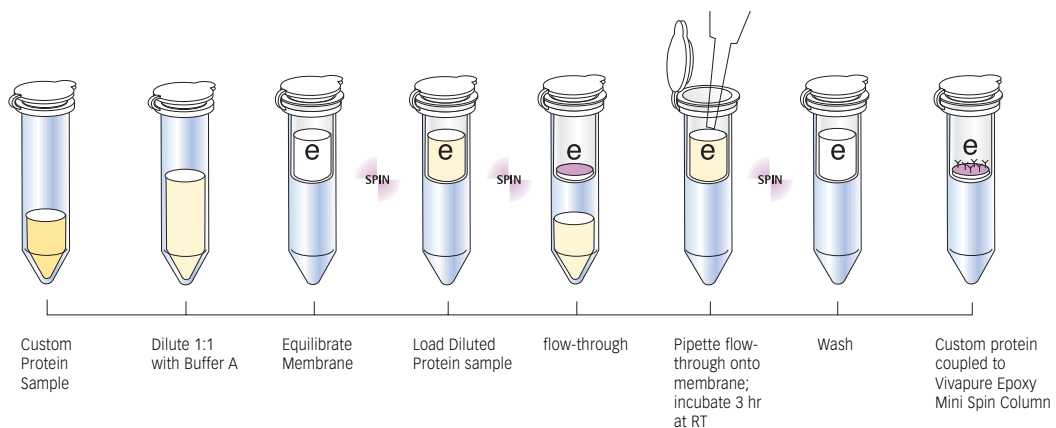
The Vivapure Epoxy Protein Coupling Kit is an excellent tool for making your own custom screening device. A large number of applications e.g. target screening for antibodies, antigens, enzymes and disease markers are greatly facilitated by the availability of custom screening possibilities. Our spin columns are ideally suited for working with multiple samples in parallel as well as for solving individual scientific questions.

Easy target protein purification

With Vivapure custom made affinity spin columns, target protein purification is fast, easy and highly specific. Your desired target protein is purified by loading the solution onto the custom made affinity spin column, binding and eluting in short centrifugation steps.

Vivapure Epoxy Protein Coupling Kit

Cat.No.	VS-PC01EPPC
Vivapure Epoxy Protein Coupling Mini Spin Columns "e"	12
Vivaspin 500, 10 kDa MWCO	12
Clarification Mini spin columns	12
Collection tubes (2 ml)	36
Buffer A	25 ml
Buffer B	25 ml
Instruction Manual	1
Laminated Protocol Card	1

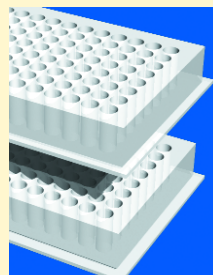


Related Products

Vivapure family:

- Ion Exchange spin columns
- Acidic Protein Purification Kit
- Basic Protein Purification Kit
- DNA Removal Kit
- Albumin Removal Kit
- Protein A Mini spin columns
- Metal Chelate Mini spin columns

Products also available in 96 well plates and 8 strip



Cell culture products

- miniPERM bioreactor

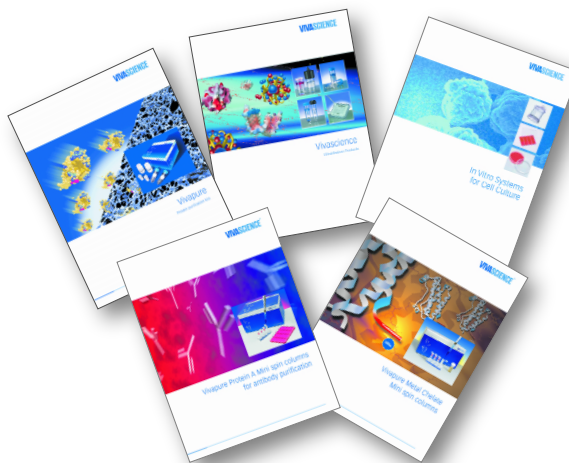


Ordering Information

Cat Number	Vivapure Spin Columns	Spin Columns	Cat Number	Vivapure Ion Exchange Maxi Spin Columns	Spin Columns	Centrifuge Tubes	
VS-PA01PA24	Protein A Mini	24	VS-IX20CM08	Vivapure C Maxi M	8	16	
VS-MC01MC12	Metal Chelate Mini	12	VS-IX20CH08	Vivapure C Maxi H	8	16	
Cat Number	Vivapure Kits	Spin Columns	VS-IX20DM08	Vivapure D Maxi M	8	16	
VS-PC01EPPC	Epoxy Protein Coupling Kit	12	VS-IX20DH08	Vivapure D Maxi H	8	16	
VS-IX01QHGP	Acidic Protein Purification Kit Q Mini H	8	VS-IX20QM08	Vivapure Q Maxi M	8	16	
VS-IX20QHGP	Acidic Protein Purification Kit Q Maxi H	4	VS-IX20QH08	Vivapure Q Maxi H	8	16	
VS-IX01SHGP	Basic Protein Purification Kit S Mini H	8	VS-IX20SM08	Vivapure S Maxi M	8	16	
VS-IX20SHGP	Basic Protein Purification Kit S Maxi H	4	VS-IX20SH08	Vivapure S Maxi H	8	16	
VS-IX01QHAR	Albumin Removal Kit Q Mini H	12	Cat Number	Vivapure Ion Exchange Mega Spin Columns	Spin Columns	Centrifuge Tubes	
VS-IX20QHAR	Albumin Removal Kit Q Maxi H	4	VS-IX75QH02	Vivapure Q Mega H	2	2	
VS-IX01DMDR	DNA Removal Kit D Mini M	12	VS-IX75DH02	Vivapure D Mega H	2	2	
VS-IX20DMDR	DNA Removal Kit D Maxi M	6	VS-IX75SH02	Vivapure S Mega H	2	2	
Cat Number	Vivapure Ion Exchange Mini Spin Columns	Spin Columns	Centrifuge Tubes	VS-IX75CH02	Vivapure C Mega H	2	2
VS-IX01ST16	Vivapure Mini H Starter Kit (4 of each ion exchange class)	16	32				
VS-IX01CL24	Vivapure C Mini L	24	48				
VS-IX01CM24	Vivapure C Mini M	24	48				
VS-IX01CH24	Vivapure C Mini H	24	48				
VS-IX01DL24	Vivapure D Mini L	24	48				
VS-IX01DM24	Vivapure D Mini M	24	48				
VS-IX01DH24	Vivapure D Mini H	24	48				
VS-IX01QL24	Vivapure Q Mini L	24	48				
VS-IX01QM24	Vivapure Q Mini M	24	48				
VS-IX01QH24	Vivapure Q Mini H	24	48				
VS-IX01SL24	Vivapure S Mini L	24	48				
VS-IX01SM24	Vivapure S Mini M	24	48				
VS-IX01SH24	Vivapure S Mini H	24	48				



The image displays five Vivapure product brochures fanned out. The brochures feature the Vivapure logo at the top and show various spin columns and kits. The titles of the brochures are: 'In Vitro Systems for Cell Culture', 'Vivapure Protein A Mini spin columns for antibody purification', 'Vivapure Metal Chelate Mini spin columns', 'Vivapure Ion Exchange Mini spin columns', and 'Vivapure Ion Exchange Mega Spin Columns'.



For more information on related products, please refer to the:

- Vivascience Ultrafiltration Catalog - Vivaspin
- Vivapure® Catalog for kits and devices for protein purification
- Vivapure® Protein A Mini spin column brochure
- Vivapure® Metal Chelate Mini spin column brochure
- Vivascience Cell Culture Catalog

For current information and application notes, please visit us at www.vivascience.com

Vivascience Technical Support		Phone	Fax	E-mail
USA	Vivascience Service & Technical Support	+1 877 452 2345 (toll free)	+1 760 918 8281	info.usa@vivascience.com
Europe	Vivascience Support Center	+49 1 802 000 581 (toll free)	+49 1 802 000 583	info@sc.vivascience.de
International	Vivascience Support Center	+49 551 38906 0	+49 551 38906 11	info@sc.vivascience.de
Vivascience Customer Sales				
France	Vivascience S.A.R.L.	+33 169 19 93 23	+33 160 13 95 05	info.france@vivascience.com
Germany	Vivascience AG	+49 551 308 4023	+49 551 308 3289	info.germany@vivascience.com
UK	Vivascience Ltd.	+44 1372 737 159	+44 1372 726 171	info.uk@vivascience.com
USA	Vivascience Inc.	+1 877 452 2345	+1 760 918 8281	info.usa@vivascience.com

Vivascience AG

Feodor-Lynen-Strasse 21 Phone: +49 511 524875-0 E-mail: info@vivascience.com
 30625 Hannover, Germany Fax: +49 511 524875-19 Web: www.vivascience.com