

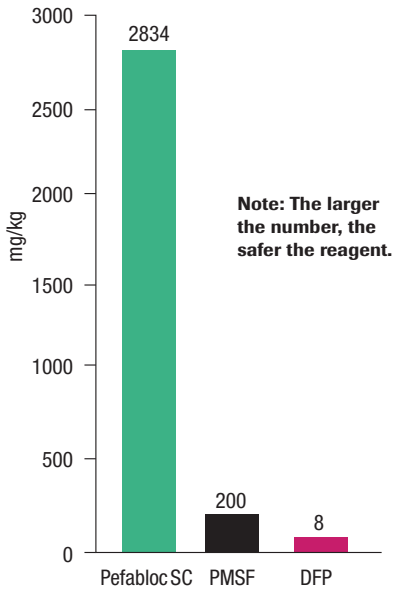
*Roche Molecular Biochemicals*  
**The Complete Guide for  
Protease Inhibition**

featuring the c@plete Protease  
Inhibitor Cocktail Tablets

Convenience  
and Reliability



In just minutes, serine proteases can destroy the proteins you have spent days isolating. In the past, PMSF and DFP were used to eliminate this problem. However, they provided uncertain protection for protein samples due to their poor stability and solubility in aqueous solutions. Now, protecting your proteins has a simple solution .... an aqueous solution, made with Pefabloc SC.



**Figure 1. Safety of Pefabloc SC compared to PMSF and DFP.** Mice were given oral doses of each inhibitor, and the LD<sub>50</sub> in mg/kg was determined.

## Convenience and Reliability with *Pefabloc SC*

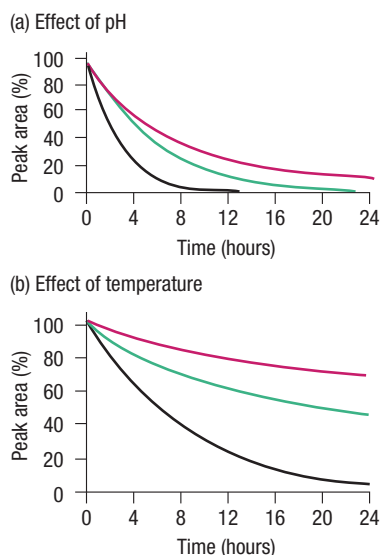
Despite the popularity of PMSF and DFP, both have serious disadvantages. Today, Pefabloc SC is the preferred serine protease inhibitor, providing superior protection with unmatched CONVENIENCE and RELIABILITY.

### Convenience:

- **Easier to use** – Pefabloc SC is readily soluble in water, and may be added directly to aqueous buffers. Unlike Pefabloc SC, PMSF and DFP are poorly soluble in water. Because of this, stock solutions must be prepared in organic solvents, and only then added to aqueous solutions.
- **Safer to use** – PMSF is a neurotoxin, and DFP is a deadly cholinesterase inhibitor. In contrast, non-toxic Pefabloc SC provides complete protease inhibition without risk to you, or those around you (Figure 1).

### Reliability:

- **Improved stability** – Pefabloc SC remains highly active in aqueous solutions, protecting your proteins long after PMSF and DFP have failed. Protease inhibition is sustained even at pH levels above 7.0 and temperatures above 4°C (Figure 2).
- **Maximize inhibition** – Superior solubility and stability in aqueous buffers mean that Pefabloc SC eliminates the guesswork and promotes success! The poor solubility and stability of PMSF make it difficult to maintain an effective concentration, and leaves you questioning whether levels of active inhibitor are high enough to assure total protection.



**Figure 2. The effect of temperature and pH on the stability of Pefabloc SC.** (Ref. 32)

Graph (a) shows the relative stability of Pefabloc SC (5.0 mg/ml) in an aqueous phosphate buffer at 37°C.

- pH 6.5
- pH 7.0
- pH 7.5

Graph (b) shows the relative stability of Pefabloc SC (5.0 mg/ml) in an aqueous phosphate buffer at pH 7.0.

- 4°C
- 22°C
- 37°C

## *Pefabloc SC*: Increase flexibility with a broad range of applications

Pefabloc SC can be used in all applications where the general inhibition of serine proteases is desired. With its high stability and irreversible inhibition mechanism, protein solutions are protected throughout total procedures, such as:

- extraction processes (from animal tissues or cells, plants, bacteria, yeast, and fungi)
- subsequent purification steps
- sample storage conditions
- downstream protein analysis
- biochemical studies where proteins are required.

Pefabloc SC is especially useful to inactivate proteinase K, for example, during pulse field gel electrophoresis (PFGE). With this technique, isolating the genomic DNA requires proteinase K to degrade cellular components, and this highly resilient protease is difficult to inactivate. Pefabloc SC inhibits proteinase K, and protects the stability of restriction enzymes used for further DNA analysis.

## Additional Convenience and Reliability with *Pefabloc SC PLUS*

Recent findings indicate that sulfonyl-type serine protease inhibitors like Pefabloc SC and PMSF can bind covalently to proteins. This can occur when the inhibitors are used in high concentrations, or during extended incubation times under alkaline conditions (Figure 3). This interaction adversely affects the tyrosine and lysine residues of a protein, as well as the free amino terminus. The Pefabloc SC PLUS set combines the protease inhibitor Pefabloc SC with a uniquely formulated Pefabloc SC protector (PSC protector). In addition to the benefits already described for Pefabloc SC, it offers *additional* CONVENIENCE and RELIABILITY.

### Additional Convenience:

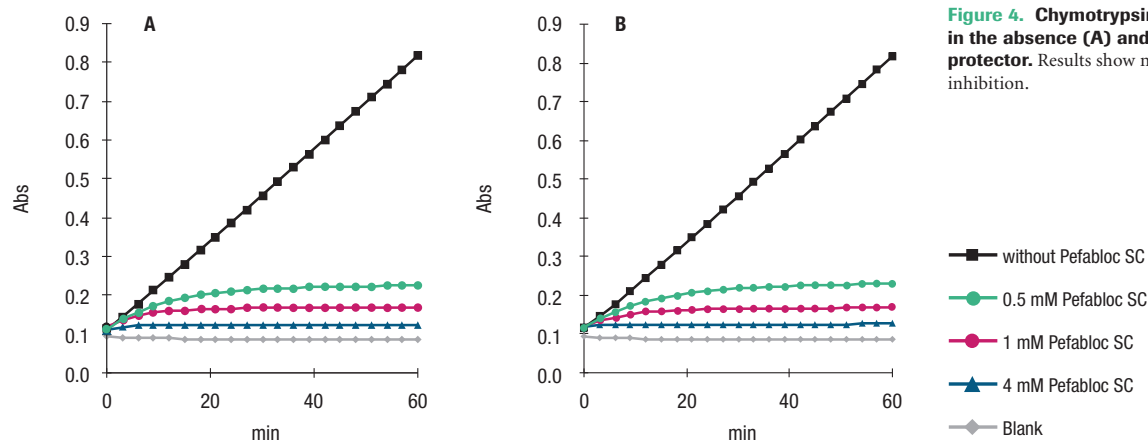
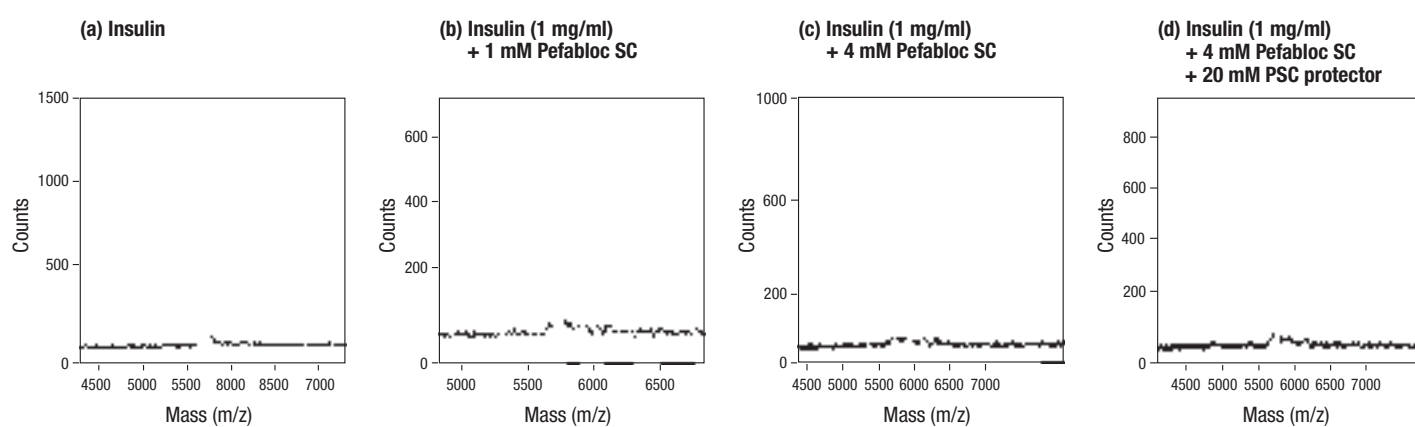
- Simplified, two-reagent system with balanced quantities of reagents.
- Both Pefabloc SC and the PSC protector are stable and non-toxic.

### Additional Reliability:

- No covalent binding between proteins and Pefabloc SC, even at high concentrations, extended incubation times, and at alkaline pH (Figure 3).
- No influence on the inhibitory effectiveness of Pefabloc SC (Figure 4).

**Additionally available:** When it is not possible to replace Pefabloc SC for PMSF in your protocols, try PMSF PLUS, with its own special reagent – the PMSF protector\*. As when using Pefabloc SC PLUS, the PMSF protector prevents covalent protease inhibitor-protein binding while having no influence on the inhibitory effectiveness of PMSF (data analogous to results shown in Figures 3 and 4).

**Figure 3 (a-d):** Mass spectrograms showing the covalent interaction between insulin and the protease inhibitor Pefabloc SC. Diagram (a) is the insulin blank. At 1 mM Pefabloc SC, the formation of the binding is visible as a second peak formation (diagram b). Higher concentrations of the protease inhibitor result in more than one interaction per insulin molecule (diagram c). The special PSC protector eliminates this covalent interaction, even at the highest concentrations (diagram d). Matrix peaks are subtracted.



**Figure 4.** Chymotrypsin inhibition with Pefabloc SC in the absence (A) and presence (B) of the PSC protector. Results show no change in the effectiveness of inhibition.



## Convenience and Reliability in a cOmplete tablet

cOmplete Protease Inhibitor Cocktail Tablets eliminate the time consuming search for just the right inhibitor. Provided in an easy to use form, simply add one tablet to the aqueous buffer and protect your proteins against a broad range of proteases.



The cOmplete Protease Inhibitor Cocktail Tablets end your time-consuming search for just the right protease inhibitor. These quick dissolving tablets provide the CONVENIENCE and RELIABILITY needed, and end the task of weighing out individual components.

### Convenience:

- Mixture of protease inhibitors in one cOmplete tablet can stop a multitude of proteases (Table 1), including serine proteases, cysteine proteases and metalloproteases.
- Use one inhibitor cocktail to work in extracts from almost any tissue or cell, including animals, plants, yeast, bacteria, or fungi.
- Available in two tablet sizes, allowing you to decide the buffer volume.
- Tablets mean never weighing or measuring small quantities anymore.

### Reliability:

- Deliver consistent doses of protease inhibition.
- All components provide stable, non-toxic protection in aqueous buffers. EDTA-free tablets do not affect the stability of metal-dependent proteins nor the function of purification techniques (i.e. Poly-His tagged proteins).

## cOmplete protection eliminates the worry

Achieve optimal protection with a single tablet. The cOmplete Protease Inhibitor Cocktail Tablets eliminate the questions .... and the doubt.

**Table 1: Inhibitions of different proteases by cOmplete Protease Inhibitor Tablets.**

One cOmplete tablet was added per 50 ml incubation solution. Proteolytic activity was determined with the Roche Molecular Biochemicals Universal Protease Substrate-casein, resorufin-labeled (Cat. No. 1 080 733). When extractions or single-step isolations are necessary in the acid pH range, simply include Pepstatin along with cOmplete tablets to ensure aspartic (acid) protease inhibition.

All experiments were performed at room temperature.

Source and concentration of protease	Type of protease	% Inhibition immediately after adding cOmplete	% Inhibition 60 min after adding cOmplete
<b>Chymotrypsin</b> , 1.5 µg/ml	Serine	97%	97%
<b>Thermolysin</b> , 0.8 µg/ml	Metallo	99%	100%
<b>Papain</b> , 1 mg/ml	Cysteine	95%	73%
<b>Pronase</b> , 1.5 µg/ml	Mixture	88%	99%
<b>Pancreatic extract</b> , 1.5 µg/ml	Mixture	87%	99%
<b>Trypsin</b> , 0.002 µg/ml	Serine	93%	73%

# Classes of Protease Inhibitors available from Roche Molecular Biochemicals

General inhibitors for				Protease-specific inhibitors	for the inhibition of:
Serine proteases <sup>a</sup>	Cysteine proteases <sup>b</sup>	Metallo-proteases <sup>c</sup>	Aspartic proteases <sup>d</sup>	Antipain dihydrochloride	Papain, Trypsin (Plasmin)
Antithrombin III	E-64	EDTA-Na <sub>2</sub>	Pepstatin	Calpain Inhibitor I	Calpain I > Calpain II
Aprotinin		Phosphoramidon		Calpain Inhibitor II	Calpain II > Calpain I
3,4-Dichloroisocoumarin		Bestatin (aminopeptidases)		Chymostatin	Chymotrypsin
APMSF		TIMP-2 (matrix metallo-proteinases)		Hirudin	Thrombin
Pefabloc SC and Pefabloc SC PLUS				TLCK · HCl	Trypsin, other serine and cysteine proteases (e.g., Bromelain, Ficin, Papain)
Leupeptin (inhibits serine and cysteine proteases with trypsin-like specificity)				TPCK	Chymotrypsin, other serine and cysteine proteases (e.g., Bromelain, Ficin, Papain)
PMSF and PMSF PLUS				Trypsin-Inhibitor (chicken egg white, soybean)	Trypsin
<b>cOmplete, EDTA-free</b> Protease Inhibitor Cocktail Tablets*					
<b>cOmplete</b> Protease Inhibitor Cocktail Tablets*					
α <sub>2</sub> -Macroglobulin					

\* When extractions or single step isolations are necessary in the acidic pH range, simply include Pepstatin along with cOmplete tablets to ensure aspartic (acid) protease inhibition.

- a) Contain serine and histidine in active center
- b) Contain cystine (thiol, SH-) in active center
- c) Contain metal ions (e.g. Zn<sup>+2</sup>, Ca<sup>+2</sup>, Mn<sup>+2</sup>) in active center
- d) Contain aspartic (acidic) group in the active center

## Protease Inhibitor Cocktails

Inhibitor	Specificity of inhibitor	Solubility/ Stability	Suggested starting concentration	Notes
<b>cOmplete</b> Protease Inhibitor Cocktail Tablets (1 tablet used in 50 ml) 1 697 498      20 tablets 1 836 145      3 x 20 tablets	Mixture of several protease inhibitors with broad inhibitory specificity. Inhibits serine, cysteine, and metalloproteases, as well as calpains. Use for extracts from tissues or cells, including animals, plants, bacteria, yeast, and fungi. Contains both reversible and irreversible proteases.	Soluble in aqueous buffers, or add directly to extraction media. Alternatively, prepare 25x stock solutions in 2 ml water or 100 mM phosphate buffer, pH 7.0. Stock solution is stable for 1-2 weeks at 4 °C or at least 12 weeks at -20 °C. All inhibitors in cOmplete can be removed via dialysis. Use of a membrane with cutoff > 10 kDa is recommended. cOmplete can be used in thiol-containing solutions at room temperature.	Dissolve one tablet in 50 ml aqueous buffer (without divalent cations) or water. If very high proteolytic activity is present, use one tablet for 25 ml buffer.	For optimal inhibition of metalloproteases, do not prepare protease inhibitor cocktails with buffers containing divalent cations (e.g. Ca <sup>2+</sup> , Mg <sup>2+</sup> or Mn <sup>2+</sup> ). <sup>**,***</sup> A solution of one cOmplete tablet in 50 ml water has an absorbance of 0.08 at 280 nm.
<b>cOmplete Mini</b> Protease Inhibitor Cocktail Tablets (1 tablet used in 10 ml) 1 836 153      25 tablets	see specificity for cOmplete tablets above	Soluble in aqueous buffers, or add directly to extraction media. Alternatively, prepare 7x stock solutions in 1.5 ml water or 100 mM phosphate buffer, pH 7.0. Stock solution is stable for 1-2 weeks at 4 °C or at least 12 weeks at -20 °C. All inhibitors in cOmplete can be removed via dialysis. Use of a membrane with cutoff > 10 kDa is recommended. cOmplete can be used in thiol-containing solutions at room temperature.	Dissolve one tablet in 10 ml aqueous buffer or water. If very high proteolytic activity is present, use one tablet for 7 ml buffer.	see notes for cOmplete tablets above
<b>cOmplete, EDTA-free</b> Protease Inhibitor Cocktail Tablets (1 tablet used in 50 ml) 1 873 580      20 tablets	Mixture of several protease inhibitors that inhibit a broad spectrum of serine and cysteine proteases. Use for extracts from tissue or cells including animals, plants, bacteria, yeast, and fungi. Contains both reversible and irreversible proteases. EDTA-free tablets will not affect the stability or function of metal-dependent proteins.	Soluble in aqueous buffers, or add directly to extraction media. Alternatively, prepare 25x stock solutions in 2 ml water or 100 mM phosphate buffer, pH 7.0. Stock solution is stable for 1-2 weeks at 4 °C or at least 12 weeks at -20 °C. All inhibitors in cOmplete can be removed via dialysis. Use of a membrane with cutoff > 10 kDa is recommended. cOmplete can be used in thiol-containing solutions at room temperature.	Dissolve one tablet in 50 ml aqueous buffer or water. If very high proteolytic activity is present, use one tablet for 25 ml buffer.	Does not contain EDTA; thus metal dependent proteins and IMAC isolation techniques (e.g., for Poly-His-tagged proteins) are not affected. <sup>**</sup>
<b>cOmplete Mini, EDTA-free</b> Protease Inhibitor Cocktail Tablets (1 tablet used in 10 ml) 1 836 170      25 tablets	see specificity for cOmplete, EDTA-free tablets above	Soluble in aqueous buffers, or add directly to extraction media. Alternatively, prepare 7x stock solutions in 1.5 ml water or 100 mM phosphate buffer, pH 7.0. Stock solution is stable for 1-2 weeks at 4 °C, or at least 12 weeks at -20 °C. All inhibitors in cOmplete can be removed via dialysis. Use of a membrane with cutoff > 10 kDa is recommended. cOmplete can be used in thiol-containing solutions at room temperature.	Dissolve one tablet in 10 ml aqueous buffer or water. If very high proteolytic activity is present, use one tablet for 7 ml buffer.	see notes for cOmplete, EDTA-free tablets above

\*\* Aspartic (acid) proteases exhibit pronounced activity only at low pH. If extraction or single isolation steps must be performed at low pH, simply add Pepstatin to ensure aspartic protease inhibition.

\*\*\* If IMAC (immobilized metal chelate affinity chromatography) is to be performed (e.g., for isolating Poly-His-tagged recombinant proteins), remove EDTA via dialysis. As an alternative, use the Complete EDTA-free tablets, available separately.

# Individual Protease Inhibitors

Inhibitor	Specificity of inhibitor	Solubility/Stability*	Suggested starting concentration**	Notes
<b>Antipain-dihydrochloride (Papain Inhibitor)</b> 1 004 646 10 mg 1 004 697 Bulk	Inhibits papain and trypsin. Plasmin is inhibited to a small extent.	Soluble in: H <sub>2</sub> O, methanol, DMSO*** to 20 mg/ml. Sparingly soluble in: ethanol, propanol, butanol. Insoluble in: benzene, chloroform (CHCl <sub>3</sub> ), hexane, petroleum and ethyl ethers.	50 µg/ml (74 µM) (1 U of papain is inhibited to 49% by 0.9 µg of antipain.)	Molecular Weight: 677.63 Antipain is more specific for papain and trypsin than is leupeptin. The inhibitory potency of antipain is 100-fold higher than that of elastatinal [Ref. 1,2 (p. 683), 3, 4, 5].
<b>Antithrombin III (Heparin Co-factor)</b> from human plasma 602 434 10 Inh. U 410 624 Bulk	Antithrombin III (AT III) inhibits all serine proteases of the blood coagulation system, including thrombin, plasmin, kallikrein, the protease factors IXa, Xa, XIa, and XIIa. It also inhibits trypsin and chymotrypsin. Does not inhibit cysteine proteases, aspartic proteases, and metalloproteases.	Soluble in H <sub>2</sub> O (10 mg/ml) Stable in solution for 1 week at +4°C and pH = 7.0-9.0	1 Inh. U/ml Unit definition: One inhibitor unit AT III inactivates 1 U of thrombin (25°C, pH 8.1) in the presence of heparin.	Molecular Weight: 65,000 AT III forms an irreversible 1:1 complex with serine proteases. Once formed, the (AT · thrombin) complex does not dissociate, even during electrophoreses in the presence of denaturing and reducing agents. AT III from Roche is heparin free. The rate of complex formation is accelerated by typically 0.2 units of heparin per unit AT III (Ref. 6, 7).
<b>APMSF (4-Amidino-phenyl) methane-sulfonyl fluororide</b> 917 575 10 mg 973 386 Bulk	Specific and irreversible inhibitor of serine proteases (e.g., trypsin, thrombin, factor Xa, plasmin). Unlike PMSF, APMSF does not inhibit chymotrypsin or acetylcholinesterase.	Can be dissolved in water, soluble to 20 mg/ml. Solution can be stored frozen at -20°C in aliquots. Stability is pH dependent: t <sub>1/2</sub> : pH 6, 20 min; pH 7, 6 min; pH 8, 1 msec.	0.01-0.04 mg/ml (10-20 µM)	Molecular Weight: 216.2 Inhibitory action corresponds to that of DFP, but APMSF is not nearly as toxic (Ref. 34).
<b>Aprotinin</b> 236 624 10 mg 981 532 50 mg 1583 794 100 mg 236 632 Bulk	Serine protease inhibitor. Does not act on thrombin or Factor X. Inhibits plasmin, kallikrein, trypsin, chymotrypsin with high activity.	Freely soluble in H <sub>2</sub> O (10 mg/ml) or aqueous buffer solution (e.g., Tris, 0.1 M, pH 8.0). A solution adjusted to pH 7-8 is stable for approx. 1 week at +4°C. Aliquots stored at -20°C are stable approx. 6 months.	0.06-2.0 µg/ml (0.01-0.3 µM)	Molecular Weight: 6,512 Avoid repeated freeze-thaws and exposure to strong alkali solutions. Aprotinin is inactive at pH >12.8 (Ref. 10).
<b>Bestatin</b> 874 515 10 mg 1359 070 50 mg 858 960 Bulk	Primarily, if not exclusively, an inhibitor of amino peptidases and other exopeptidases, including aminopeptidases found in wheat germ and reticulocyte lysate <i>in vitro</i> translation systems (e.g., amino-peptidase B, leucine aminopeptidase, tripeptide aminopeptidase, and aminopeptidases on the surface of mammalian cells). It does not inhibit carboxypeptidases.	Soluble to 20 mg/ml in 1 M HCl, 5 mg/ml in methanol, and 1 mg/ml in 0.15 M NaCl. Do not store in HCl. We recommend a stock solution of 2-5 mg/ml in methanol.  Solutions are stable for 6 months if stored in aliquots at -20°C.	40 µg/ml (130 µM)	Molecular Weight: 308.4 Bestatin has been found to have antitumor properties and enhances not only blastogenesis and lymphocytes <i>in vitro</i> , but also establishes a delayed-type hypersensitivity <i>in vivo</i> (Ref. 1, 11-14).
<b>Calpain Inhibitor I (N-Acetyl-Leu-Norleucinal)</b> 1 086 090 25 mg 1 087 177 Bulk	Inhibitor of calpains, Calpains are calcium-dependent neutral cysteine proteases. Inhibits activity of Calpain I. ID <sub>50</sub> for 0.02 U platelet Calpain I: 0.05 µmol/l. Some inhibitory activity against Calpain II. Inhibits papain to a lesser extent.	Soluble in DMF, ethanol, and methanol to 10 mg/ml. For a stock solution, we recommend dissolving 1 mg of the inhibitor in 100 µl DMF, methanol or ethanol. Before use, dilute with water or phosphate buffer (0.1 M, pH 7.5) to desired concentration.  Solutions in DMF, ethanol, or methanol are stable for 2-3 days at +4°C and approx. 4 weeks at -20°C. We recommend making solutions up fresh before use.	17 µg/ml	Molecular Weight: 383.5 Not soluble in water (Ref. 15-18).
<b>Calpain Inhibitor II (N-Acetyl-Leu-Leu-methioninal)</b> 1 086 103 25 mg 1 087 185 Bulk	Inhibits activity of Calpain II. Inhibits Calpain I (ID <sub>50</sub> = 0.12 µmol/l) and papain to a lesser extent.	(See Calpain Inhibitor I, above).	7 µg/ml	Molecular Weight: 401.6 Not soluble in water (Ref. 15, 16, 17, 19).
<b>Chymostatin</b> 1 004 638 10 mg 1 004 689 Bulk	Specific inhibitor of α-, β-, γ-, δ-chymotrypsin.	Soluble in: glacial acetic acid, DMSO*** to 20 mg/ml. Sparingly soluble in: water, methanol, ethanol. Insoluble in: ethyl acetate, petroleum and ethyl ethers, hexane, chloroform (CHCl <sub>3</sub> ). Dilute solutions should be stored frozen in aliquots at -20°C. Stable approx. 1 month.	6-60 µg/ml (10-100 µM) Unit definition: One unit chymotrypsin is inhibited to 49% by 1.8 µg of chymostatin.	Molecular Weight: 607.71 [Ref. 1, 2 (p. 686), 20]

\* Unless otherwise stated, make solutions of inhibitors fresh daily.

\*\* Recommended as a starting concentration. Suitable concentrations must be determined empirically for each new system.

\*\*\* CAUTION: DMSO (Dimethyl sulfoxide) will permeate the skin, carrying solubilized protease inhibitors. Always wear appropriate protection for eyes, skin, etc.

# Individual Protease Inhibitors

Inhibitor	Specificity of inhibitor	Solubility/ Stability*	Suggested starting concentration**	Notes	
<b>3,4-Dichloroisocoumarin</b> 973 840 917 184	Inhibits a large number of serine proteases such as elastase, cathepsin G, and endoproteinase Glu-C (Staph. V-8 protease).	May be dissolved in DMF and stored in aliquots at $-20^{\circ}\text{C}$ .	1–43 $\mu\text{g/ml}$ (5–200 $\mu\text{M}$ )	Molecular Weight: 215.0 Does not inhibit the thiol protease papain, the metalloprotease leucine aminopeptidase or $\beta$ -lactamase. More sensitive to hydrolysis than APMSF (Ref. 21).	
<b>E-64</b> <b>(N-(N-(L-3-Trans-carboxirane-2-carbonyl)-L-leucyl)-agmatine)</b> 1 585 673 874 523 1 585 681 858 951	Inhibits papain and other cysteine proteases like cathepsin B and L.	Soluble to 20 mg/ml in a 1:1 (v/v) mixture of ethanol and water.  Solutions are stable for 1 month if stored in aliquots at $-20^{\circ}\text{C}$ .	0.5–10 $\mu\text{g/ml}$ (1.4–28.0 $\mu\text{M}$ )	Molecular Weight: 357.4 Stable between pH 2–10. Unstable in strong alkali and strong mineral acids (Ref. 23–25).	
<b>EDTA-Na<sub>2</sub></b> 808 261 808 270 808 288 808 245	Inhibits metalloproteases.	Soluble in water to 0.5 M at pH 8–9. Stable at $+4^{\circ}\text{C}$ for at least 6 months.	0.2–0.5 mg/ml (0.5–1.3 mM)	Molecular Weight: 372.24 The disodium salt of EDTA will not go into solution until the pH of the solution is adjusted to approximately 8.0 by the addition of NaOH (Ref. 22).	
<b>EGTA</b> 1 093 053 1 092 979	Specifically inhibits $\text{Ca}^{2+}$ -dependent proteases.	Stock solution: 200 mg/ml in 1 N NaOH. Stable at $+4^{\circ}\text{C}$ for at least 6 months.	0.2–0.5 mg/ml (0.5–1.3 mM)	Molecular Weight: 380.35. Hardly soluble in water and all organic solvents. Slightly soluble in DMF and DMSO.	
<b>Hirudin</b> from <i>Hirudo medicinalis</i> (European leeches) 1 110 276	2000 ATU (2 mg)	Specifically inhibits thrombin.	Soluble in 50% ethanol, water, and commonly used buffers. The lyophilizate is stable at room temperature for approx. 2 years. Solutions can be stored at $-20^{\circ}\text{C}$ for at least 6 months.	150–200 ATU/ml plasma Unit definition: One anti-thrombin unit (ATU) neutralizes one NIH unit of thrombin (fibrinogen assay) at $37^{\circ}\text{C}$ .	
<b>Leupeptin</b> 1 017 101 1 017 128 1 034 626 1 529 048 528 595	5 mg 25 mg 50 mg 100 mg Bulk	Inhibits serine and cysteine proteases such as trypsin, papain, plasmin, and cathepsin B.	Highly soluble in water (1 mg/ml). Stable for at least 1 week at $+4^{\circ}\text{C}$ and 6 months frozen in aliquots at $-20^{\circ}\text{C}$ .	0.5 $\mu\text{g/ml}$ (1 $\mu\text{M}$ )	Molecular Weight: $\text{C}_{20}\text{H}_{38}\text{N}_6\text{O}_4 \times 1/2 \text{H}_2\text{SO}_4$ : 475.6 $\text{C}_{20}\text{H}_{38}\text{N}_6\text{O}_4 \times 1/2 \text{H}_2\text{SO}_4 \times \text{H}_2\text{O}$ : 493.6
<b><math>\alpha_2</math>-Macroglobulin</b> 602 442 582 573	25 Inh. U Bulk	A general endoproteinase inhibitor. Inhibits most endoproteases, but does not inhibit endoproteases that are highly specific for one or a limited number of sequences (e.g., tissue kallikrein, urokinase, coagulation factor XIIa, and endoproteinase Lys-C).	Soluble in water. Stable at least 1 week at room temperature or 3 weeks at $+4^{\circ}\text{C}$ . Can also be frozen in aliquots at $-20^{\circ}\text{C}$ , where it remains stable at least 6 months.  Sensitive to acidic pH, denatured below pH 4.0. Ammonia methylamine and hydroxylamine (above pH 7.0) cause irreversible conversion to the inactive form.	Unit definition: One inhibitor unit inhibits 9.1 $\mu\text{g}$ of trypsin.	Molecular Weight: 725,000 Do not use $\alpha_2$ -Macroglobulin in presence of DTT. DTT, even at 1 mM, causes reversible dissociation into inactive subunits. $\alpha_2$ -Macroglobulin acts by physically entrapping the endoproteases, usually in a 1:1 ratio (Ref. 27).
<b>Pefabloc SC</b> <b>4-(2-Aminoethyl)-benzenesulfonyl-flouride, hydrochloride (AEBSF)</b> 1 429 868 1 585 916 1 429 876 1 427 393	100 mg 500 mg 1 g Bulk	Irreversibly inhibits serine proteases, including trypsin, chymotrypsin, plasmin, plasma kallikrein, and thrombin.	Soluble up to 100 mg/ml in aqueous buffers and water. Stable in solution for 1–2 months if stored in aliquots at $-20^{\circ}\text{C}$ . Only slight hydrolysis occurs under weakly basic conditions (pH 8.0–9.0).	0.1–1.0 mg/ml (0.4–4 mM)	Molecular Weight: 239.5 A safe, stable, and water soluble alternative to PMSF and DFP (Ref. 29–32).
<b>Pefabloc SC PLUS</b> 1 873 601 1 873 628	Set I (100 mg Pefabloc SC) Set II (1 g Pefabloc SC)	Specificity of the protease inhibitor remains unchanged. See Pefabloc® SC.	Solubility and stability of the protease inhibitor remains unchanged. See Pefabloc SC.	0.1–1.0 mg/ml (0.4–4.0 mM)	Sets contain of Pefabloc SC and a special protector (PSC-protector). The set eliminates interaction between Pefabloc SC and sample proteins.
<b>Pepstatin</b> 253 286 1 359 053 1 524 488 253 294	2 mg 10 mg 50 mg Bulk	Inhibits aspartic (acid) proteases such as pepsin, renin, cathepsin D, chymosin, and many microbial acid proteases.	Soluble in methanol to approx. 1 mg/ml. Also soluble to 1 mg/ml in ethanol if allowed to sit overnight, and to 300 $\mu\text{g/ml}$ in 6 N acetic acid. Stable at least 1 week at $+4^{\circ}\text{C}$ , or 1 month if stored in aliquots at $-20^{\circ}\text{C}$ .	0.7 $\mu\text{g/ml}$ (1 $\mu\text{M}$ )	Molecular Weight: 685.9 Insoluble in water (Ref. 33).

\* Unless otherwise stated, make solutions of inhibitors fresh daily.

\*\* Recommended as a starting concentration. Suitable concentrations must be determined empirically for each new system.

\*\*\* CAUTION: DMSO (Dimethyl sulfoxide) will permeate the skin, carrying solubilized protease inhibitors. Always wear appropriate protection for eyes, skin, etc.

# Individual Protease Inhibitors

Inhibitor	Specificity of inhibitor	Solubility/ Stability*	Suggested starting concentration**	Notes	
<b>Phosphoramidon</b> 874 531 858 986	Specifically inhibits thermolysin, collagenase, and metalloendoproteinases from various microorganisms ( <i>Bacillus subtilis</i> , <i>Streptomyces griseus</i> and <i>Pseudomonas aeruginosa</i> ).	Salts of phosphoramidon are soluble to 20 mg/ml in water. Also soluble in methanol and DMSO.*** Recommended stock solution 1–20 mg/ml. Stable in solution for 1 month if stored in aliquots at –20°C.	4–330 µg/ml (7–570 µM)	Molecular Weight: 579.6 (Ref. 1, 2, 11, 36)	
<b>PMSF (Phenylmethyl-sulfonyl fluoride)</b> 236 608 837 091 1 359 061 236 616	Inhibits serine proteases (chymotrypsin, trypsin, and thrombin). Also inhibits cysteine proteases such as papain (reversible by DTT treatment).	Soluble to >10 mg/ml in isopropanol, ethanol, methanol, and 1,2-propanediol. Unstable in aqueous solution. In 100% isopropanol, stable at least 9 months at +25°C.	17–170 µg/ml (0.1–1 mM)	Molecular Weight: 174.2 Add fresh PMSF at every isolation/purification step (from stock solution). Does not inhibit metalloproteases, most thiol proteases, and aspartic proteases (Ref. 35).	
<b>PMSF PLUS</b> 1 873 636	1 set (contains 1 g of PMSF)	Specificity of the protease inhibitor remains unchanged. See PMSF.	Solubility and stability of the protease inhibitor remains unchanged. See PMSF.	17–680 µg/ml (0.1–4.0 mM)	Set consists of PMSF and a special protector (PMSF-protector <sup>®</sup> ). The set eliminates covalent interaction between PMSF and sample proteins.
<b>TIMP-2 (Tissue Inhibitor of Metalloproteinase 2)</b> from Human Melanoma Cells 1 782 924	10 µg (500 µl)	Inhibits matrix metalloproteinase activity in enzymatic assays and <i>in vitro</i> malignant invasion assays.	Supplied in a solution of 20 mM Tris-HCl, pH 7.5, 50 mM NaCl containing 0.02 µg protein per µl. TIMP-2 is stable until the expiry date given on the label if stored at –20 C. TIMP-2 can be kept at 4 °C for 1 week without significant loss of activity. Repeated freezing and thawing should be avoided.	Specific Activity: 1 µg of TIMP-2 inhibits 0.6 mU Gelatinase 72 kD or Gelatinase 92 kD by 50% in 1 hour at 37 °C.	The protein appears as a major band at 21 kD upon SDS-PAGE inactivated by SH-containing compounds (e.g. DTT or DTE).
<b>TLCK · HCl (L-1-Chloro-3-[4-tosylamido]-7-amino-2-heptanone-HCl)</b> 874 485 874 493 858 943	100 mg 250 mg Bulk	Irreversibly and specifically inhibits trypsin. Also inhibits many other serine and cysteine proteases such as bromelain, ficin, and papain.	Salts of TLCK are soluble to 20 mg/ml in water. We recommend a stock solution of 1 mg/ml in either dilute (1 mM) HCl or buffer, pH ≤ 6; to ensure stability (see “notes” column).	37–50 µg/ml (100–135 µM)	Molecular Weight: 369.3 Stable at +25°C pH ≤ 6.0. Rapidly decomposes at pH >7.5. For example, at pH 9.0, +25°C, TLCK's half-life is only 5 minutes. Chymotrypsin is not inhibited (Ref. 37).
<b>TPCK (L-1-Chloro-3-[4-tosylamido]-4-phenyl-2-butanone)</b> 874 507 858 935	1 g Bulk	Irreversibly inhibits chymotrypsin. Also inhibits many other serine and cysteine proteases such as bromelain, ficin, and papain.	Soluble to 20 mg/ml in ethanol. Recommended stock solution: 3 mg/ml.	70–100 µg/ml (200–284 µM)	Molecular Weight: 351.9 Trypsin is not inhibited (Ref. 38, 39).
<b>Trypsin Inhibitors from chicken egg white</b> 109 878 154 440	1 g Bulk	Inhibits trypsin. Soybean trypsin inhibitor also inhibits factor Xa, plasmin, and plasma kallikrein. Neither inhibit metallo, cysteine, and aspartic proteases or tissue kallikrein.	Both are soluble in water. Recommended stock solution: 1 mg/ml. Store frozen in aliquots at –20°C. Stable at least 6 months.	10–100 µg/ml	Molecular Weight: (egg white) 28,000 (soybean) 20,100 Egg white inhibitor is stable at acid pH and labile at alkaline pH. Soybean inhibitor is sensitive to heat, high pH, and protein-precipitating solutions.
<b>from soybean</b> 109 886 109 894 041 963	50 mg 500 mg Bulk				

## Protease Inhibitor Set

In certain cases, irregular types of protease activity are encountered. Determining which protease inhibitor to use can be difficult and expensive – unless you use our Protease Inhibitor Set. Consisting of ten different inhibitors, the set provides an easy, economical way to screen for the correct inhibitor.

**Protease Inhibitor Set** Cat. No. 1 206 893

Inhibitors included in the set	Specificity of inhibition	Quantity Supplied
<b>Antipain-dihydrochloride</b>	Papain, Trypsin, Cathepsin A and B	3 mg
<b>Aprotinin</b>	Trypsin, Plasmin, Chymotrypsin, Kallikrein	0.5 mg
<b>Bestatin</b>	Aminopeptidases	0.5 mg
<b>Chymostatin</b>	α-, β-, γ-, δ-Chymotrypsin	1 mg
<b>E-64</b>	Cysteine Proteases	3 mg
<b>EDTA-Na<sub>2</sub></b>	Metalloproteases	10 mg
<b>Leupeptin</b>	Serine and Cysteine Proteases such as Plasmin, Trypsin, Papain, Cathepsin B	0.5 mg
<b>Pefabloc SC</b>	Serine Proteases	20 mg
<b>Pepstatin</b>	Aspartic Proteases	0.5 mg
<b>Phosphoramidon</b>	Metalloproteinases, specifically Thermolysin	3 mg

## Verify protease inhibition

Roche Molecular Biochemicals Universal Protease Substrate offers a fast and highly sensitive way to determine the effectiveness of protease inhibition. Proteases will digest the casein substrate and release resorufin-labeled peptides. By measuring the absorbance of these peptides, you can detect nanogram quantities of proteolytic activity in less than one hour.

**Universal Protease Substrate** (casein, resorufin-labeled)

Cat. No. 1 080 733 – 15 mg, 1 734 334 – 40 mg

## cOmplete inhibition: *the choice is yours*

When deciding on the type of protection to use against unwanted protease activity, the choice is obvious: you want cOmplete protection! And choosing the appropriate cOmplete tablet is just as simple. Available in two sizes (regular or mini) and with or without EDTA, our cOmplete Protease Inhibitor Cocktail Tablets will meet all your needs. The choice is yours!

Application	cOmplete tablets	cOmplete, EDTA-free	cOmplete, Mini	cOmplete Mini, EDTA-free
Inhibition during initial extraction steps (volumes > 50 ml).	++	++	+	+
Inhibition during subsequent purification protocols (volumes < 50 ml).	+ <sup>1</sup>	+ <sup>1</sup>	++	++
Inhibition during subsequent purification steps require free divalent cations for further processing. <sup>2</sup>	0	++	0	++
Samples containing high metalloproteolytic activity	++	0	++	0

Table 2: Choosing the correct cOmplet tablet.

++ Product of choice  
 + Can also be used  
 0 Not recommended

<sup>1</sup> preparation of stock solutions recommended  
<sup>2</sup> important for example, with metal chelate chromatography  
 Poly-His tagged proteins, or protein samples used for signal transduction research

## Enjoy cOmplete success!

Whatever your application, the versatility of our cOmplete Protease Inhibitor Cocktail Tablets are sure to provide the protection needed. Try the cOmplete Protease Inhibitor Cocktail Tablets today, and see how simple success can be. Your laboratory just isn't complete without it.

Some examples of cells, tissues and organisms of which protease activity has been successfully inhibited with cOmplete tablets – as reported in scientific literature:

- Brain tissue from rats
- CEM (acute lymphoblastic leukemia)
- Colorectal and duodenal adenomas
- Cos 7 cells
- E.Coli
- Epithelialkidney cells
- HEK 293 cells
- Hela cells
- HL 60
- HMEC (mammary epithelial cells)
- HUVE (human umbilical venous endothelial cells)
- Jurkat cells
- Keratinocytes (mammalian)
- M1 (murine leukaemic cells)
- Mammary gland (mouse)
- MCF7 cells
- MMAC1-mutated glioblastoma cell line U87MG
- Primary lung cancer cells
- Pulmonary arterial smooth muscle cells from rats
- Retina (mammalian)
- RMS (embryonal rhabdomyosarcoma cell line; RD)
- Saccharomyces cerevisiae
- Sf9 cells
- T 24 bladder carcinoma cells
- WEHI 3b D (murine leukaemic cells)

This list of cells is continually updated as we receive new reports. Please visit <http://biochem.roche.com> on the Internet for a more recent overview.





# List of International Representatives

## Australia

Roche Diagnostics Australia Pty. Ltd.  
31 Victoria Avenue  
Castle Hill, NSW 2154  
Australia  
Tel: 02 9899 7999  
Fax: 02 9899 7893

## Austria

Roche Diagnostics GmbH  
Engelhorngasse 3  
1210 Wien  
Austria  
Tel: 01 277 870  
Fax: 01 277 87 17

## Argentina

Roche Diagnostics Argentina  
Viamonte 2213  
Capital Federal  
Republica Argentina  
Post Code 1056  
Tel: 54 1 951-0023-6  
54 1 952-6081-3  
54 1 954-5555  
Fax: 54 1 952-7589

## Belgium

Roche Diagnostics Belgium sa/nv  
Av. des Croix de Guerre 90  
Oorlogskruisenlaan 90  
1120 Bruxelles  
Belgium  
Tel: 02 247 49 30  
Fax: 02 247 46 80

## Brazil

BioAgency  
R. Vitorino Carmilo, 792  
01153-000 Sao Paulo-SP  
Brazil  
Tel: +55 (11) 3666-3565/3667-  
0829/3666-4897/3667-3993  
Fax: +55 (11) 825-2225

## Canada

Roche Diagnostics  
201 boul. Armand-Frappier  
Laval, Quebec H7V 4A2  
Canada  
Tel: (450) 686-7050  
(800) 361-2070  
Fax: (450) 686-7009

## Chile

Productos Roche Ltda.  
Los Tres Antonios 119  
Casilla 399, Santiago 11  
Santiago  
Chile  
Tel: 00 56 (2) 22 33 737 (Central)  
00 56 (2) 22 32 099 (Exec)  
Fax: 00 56 (2) 22 33 004

## China

Roche Diagnostics (Hong Kong) Ltd.  
Rm A, 11/F  
Shanghai Industrial Investment Bldg.  
18 Cao XI North Road  
Shanghai 200030  
China  
Tel: (86-21) 64275586/6427/1331  
Fax: (86-21) 64275589

## Czech Republic

B.M. - COMP, spolec  
Za nádráží 58/V  
290 01 Pocer  
Czech Republic  
Tel: (0324) 45 54, 5871-2  
Fax: (0324) 45 53

## Denmark

Roche A/S Diagnost  
Industrieholmen 59  
2650 Hvidovre  
Denmark  
Tel. + 45.36 39 99 58  
Fax + 45.36 39 98 61

## Egypt

Roche Diagnostics Office  
BM-Egypt  
23 Iran Street  
Dokki, Giza  
Egypt  
Tel: 202 361 9047  
Fax: 202 361 9048

## Finland

Oriola Oy Prolab  
Reagenssijaos  
P.O. Box 8  
02101 Espoo  
Finland  
Tel: (09) 429 2342  
Fax: (09) 429 2080

## France

Roche Diagnostics  
2, Avenue du Vercors  
Boite Postale 59  
38242 Meylan Cedex  
France  
Tel: 04- 76 76 30 87  
Fax: 04- 76 76 46 90

## Germany

Roche Diagnostics GmbH  
Sandhofer Strasse 116  
68305 Mannheim  
Germany  
Tel: (49) 621 759-8540  
Fax: (49) 621 759-4083

## Hong Kong

Roche Diagnostics (Hong Kong) Ltd.  
Unit 3206-3214  
Metroplaza, Tower I  
223 Hing Fong Road  
Kwai Chung  
N.T.  
Hong Kong  
Tel: (852) 24857596  
Fax: (852) 24180728

## India

Nicholas Piramal India Limited  
Vinod House, Ground Floor  
Kasturchand Mills Estate  
228, Senapati Bapat Road  
Dadar West  
Mumbai 400 028  
India  
Tel: (22) 413 23 12  
Fax: (22) 432 84 12

## Indonesia

PT Rajawali Nusindo  
Div. Roche Diagnostics Indonesia  
JL Denpasar Raya Kav. D-III  
Kuningan  
Jakarta 12950  
Indonesia  
Tel: 62 (021) 252 3820 ext. 755  
Fax: 62 (021) 520 2844

## Iran

Teb Technology  
111 Sarvestan Business Center  
Kaj. Sq., Saadat Abad, TEH 19816  
P.O. box 14665/414  
Tehran  
Iran  
Tel: +98 21 208 2266  
Fax: +98 21 807 2374

## Iran

Tuba Negin  
Flat 9, No. 15, Mollasadra Ave  
Vanak Sq., PC 19919  
P.O. Box 15815-1957  
Tehran  
Iran  
Tel: +98 21 8785656  
Fax: +98 21 8797027

## Israel

Agentek (1987) Ltd.  
P.O. Box 58008  
Tel Aviv 61580  
Israel  
Tel: 972-3-6 49 31 11  
Fax: 972-3-6 48 12 57

## Italy

Roche Diagnostics S.p.A.  
Molecular Biochemicals  
Viale G.B. Strucchi, 110  
20052 Monza  
Milano  
Italy  
Tel: 039 247 4109-4181  
Fax: 039 247 4152

## Japan

Roche Diagnostics K.K.  
6-1, 2-chome, Shiba  
Minato-ku  
Tokyo 105-0014  
Japan  
Tel: +81-03 5443 5284  
Fax: +81-03 5443 7098

## Malaysia

Roche Diagnostics (M) Sdn. Bhd.  
1st Floor, Lot 1, Jalan 13/6  
46200 Petaling Jaya  
Selangor Darul Ehsan  
Malaysia  
Tel: 60 (03) 7555093  
Fax: 60 (03) 7555418

## Mexico

Productos Roche, S.A. de C.V.  
Roche Molecular Biochemicals  
Huizaches 25  
Col. Rancho los Colorines  
14386 Mexico, D.F.  
Mexico  
Tel: (5) 227 8967, 8768  
Fax: (5) 227 8950

## Netherlands

Roche Diagnostics Nederland B.V.  
Postbus 1007  
1300 BA Almere  
Markerkant 13 - 10  
1314 AN Almere  
Netherlands  
Tel: (0) 36-539 49 11  
Fax: (0) 36-539 42 65

## New Zealand

Roche Diagnostics N.Z. Ltd.  
15 Rakino Way  
P.O. Box 62-089  
Mt Wellington, Auckland  
New Zealand  
Tel: (09) 276 4157  
Fax: (09) 276 8917

## Norway

Medinor A/S  
Postboks 94 Bryn  
0611 Oslo  
Norway  
Tel: 22 07 65 00  
Fax: 22 07 65 05

## Philippines

Roche Philippines Inc.  
2252 Don Chino Roces Ave  
1200 Makati Metro Manila  
Philippines  
Tel: (632) 8107246/8131351  
Fax: (632) 8193647

## Poland

HAND-PROD Sp. z.o.o.  
ul. Wiosny Ludow 69  
02-495 Warszawa  
Poland  
Tel/Fax: +48 (22) 37 42 35  
Tel/Fax: +48 (22) 6 62 63 03  
Tel: +48 (22) 36 06 77 87

## Portugal

Roche, Systemas de Diagnósticos, Lda.  
Rua da Barruncheira 6  
Apartado 46, Carnaxide  
2796 Linda-a-Velha  
Portugal  
Tel: (01) 417 1717 / 4164400  
Fax: (01) 417 1313

## Saudi-Arabia

Boehringer Mannheim Saudi Arabia  
Sc.o.R.  
P.O. Box 17424  
Riyadh 11484  
Saudi Arabia  
Tel: +966-1-4010333 / 4040266 /  
4031145  
Fax: +966-1-4010364

## Singapore

Roche Diagnostics Asia Pacific Pte. Ltd.  
298 Tiong Bahru Road  
#16-00 Tiong Bahru Plaza  
Singapore 168730  
Singapore  
Tel: 65 3716533/65 3716632  
Fax: 65 3716500

## South Africa

Roche Diagnostics (South Africa) Pty.  
Ltd.  
P.O. Box 1927  
9 Will Scarlet Rd.  
Randburg 2125  
South Africa  
Tel: 011 - 886 2400  
Fax: 011 - 886 2962

## South Korea

Bio-Medical Science Co., Ltd.  
BMS Bldg., 1617-55 Seocho-Dong,  
Seocho-Ku  
Seoul 137-070  
Korea  
Tel: 82-2-3471-6500  
FAX: 82-2-3472-7001

## Spain

Roche Diagnostics  
Copérnico, 60 y 61-63  
08006 Barcelona  
Spain  
Tel: (93) 201 44 11  
Fax: (93) 201 30 04

## Sweden

Roche Diagnostics Scandinavia AB  
Box 147  
Karlsbodavagen 30  
161 26 Bromma  
Sweden  
Tel: 08 40 488 00  
Fax: 08 98 44 42

## Switzerland

Roche Diagnostics (Schweiz) AG  
Industriestr. 7  
6343 Rotkreuz  
Switzerland  
Tel: +41 (41) 799 62 34  
Fax: +41 (41) 799 65 75

## Taiwan

Formo Industrial Co., Ltd.  
Rm. D, Fl. 9, #121, Sec. 3  
Ho-Pin East Road  
P.O. Box 57-74, Taipei  
Taiwan, R.O.C.  
Tel: (02) 7367125  
Fax: (02) 7362647

## Thailand

Roche Diagnostics Thailand Ltd.  
9th Floor, Thosapol Land 2  
230 Rajchadaphisak Road  
Hwaykwang  
Bangkok 10320  
Thailand  
Tel: 66(2)2740708 (12 line)  
Fax: 66(2)2740736

## Turkey

Dr. SEVGEN Laboratuvar Teknolojisi  
ve Tic A.s. / Biochemica  
Bagdat cad No. 153/14  
Feneryolu/Istanbul  
Turkey  
Tel: 1 349 81 76-7  
Fax 1 349 81 80

## United Kingdom

Roche Diagnostics UK Ltd.  
Bell Lane  
Lewes  
East Sussex  
BN7 1LG  
United Kingdom  
Tel: 0 8008 100 54 55  
0 8008 100 99 98  
Fax: 0 800 181087  
within the Republic of Ireland  
Tel: 1 800 409041  
Fax: 1 800 709404

## United States of America

Roche Diagnostics  
Biochemical Products  
9115 Hague Road  
P.O. Box 50414  
Indianapolis, IN 46250-0414  
USA  
Tel: 800 428 5433  
Fax: 800 428 2883

# Ordering Information

## Protease Inhibitor Cocktails



Product	Cat. No.	Pack Size
<b>cOmplete</b> Protease Inhibitor Cocktail Tablets	1 697 498 1 836 145	20 tablets 3 x 20 tablets
<b>cOmplete Mini</b> Protease Inhibitor Cocktail Tablets	1 836 153	25 tablets
<b>cOmplete, EDTA-free</b> Protease Inhibitor Cocktail Tablets	1 873 580	20 tablets
<b>cOmplete Mini, EDTA-free</b> Protease Inhibitor Cocktail Tablets	1 836 170	25 tablets

## Individual Protease Inhibitors

Product	Cat. No.	Pack Size
<b>Antipain dihydrochloride</b>	1 004 646	10 mg
<b>Antithrombin III</b>	602 434	10 IU
<b>APMSF</b>	917 575	10 mg
<b>Aprotinin</b>	236 624 981 532 1 583 794	10 mg 50 mg 100 mg
<b>Bestatin</b>	874 515 1 359 070	10 mg 50 mg
<b>Calpain Inhibitor I</b>	1 086 090	25 mg
<b>Calpain Inhibitor II</b>	1 086 103	25 mg
<b>Chymostatin</b>	1 004 638	10 mg
<b>3,4-Dichloroisocoumarin</b>	973 840	10 mg
<b>E-64</b>	1 585 673 874 523 1 585 681	5 mg 10 mg 25 mg
<b>EDTA-Na<sub>2</sub></b>	808 261 808 270 808 288	250 g 500 g 1 kg
<b>EGTA</b>	1 093 053	50 g
<b>Hirudin</b>	1 110 276	2000 ATU (2 mg)
<b>Leupeptin</b>	1 017 101 1 017 128 1 034 626 1 529 048	5 mg 25 mg 50 mg 100 mg

Product	Cat. No.	Pack Size
<b>α<sub>2</sub>-Macroglobulin</b>	602 442	25 IU
<b>Pefabloc SC</b>	1 429 868 1 585 916 1 429 876	100 mg 500 mg 1 g
<b>Pefabloc SC PLUS</b>	1 873 601 1 873 628	Set I (contains 100 mg Pefabloc SC and 5 ml PSC protector solution) Set II (contains 1 g Pefabloc SC and 2 x 25 ml PSC protector solution)
<b>Pepstatin</b>	253 286 1 359 053 1 524 488	2 mg 10 mg 50 mg
<b>Phosphoramidon</b>	874 531	5 mg
<b>PMSF</b>	236 608 837 091 1 359 061	1 g 10 g 25 g
<b>PMSF PLUS</b>	1 873 636	1 Set (contains 1 g PMSF and 35 ml protector solution)
<b>Protease Inhibitor Set</b>	1 206 893	1 set
<b>TIMP-2</b>	1 782 924	10 µg (500 µl)
<b>TLCK · HCl</b>	874 485 874 493	100 mg 250 mg
<b>TPCK</b>	874 507	1 g
<b>Trypsin Inhibitor (chicken egg white)</b>	109 878	1 g
<b>Trypsin Inhibitor (soybean)</b>	109 886 109 894	50 mg 500 mg
<b>Universal Protease Substrate (Casein, resorufin-labeled)</b>	1 080 733 1 734 334	15 mg 40 mg

