

# AdvanStain™ Scarlet™

Fluorescent total protein stain for gels and blots

**AdvanStain Scarlet** is a fluorescent stain for gels and blots that allows sensitive and quantitative visualization of proteins. Gels and blots stained with AdvanStain Scarlet can be imaged on any fluorescent imaging system, including laser- and CCD-based systems, with a detection limit of less than 1 ng of protein per band or spot. Fully compatible with downstream Western blotting or mass spectrometry, AdvanStain Scarlet is non-toxic and biodegradable, for safe and simple disposal.

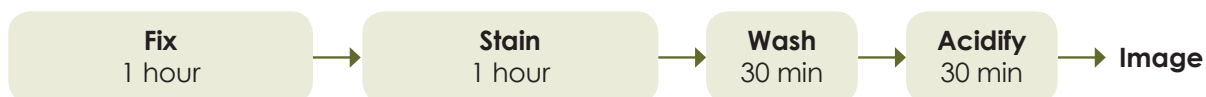


# AdvanStain™ Scarlet™

## Fluorescent total protein stain for gels and blots

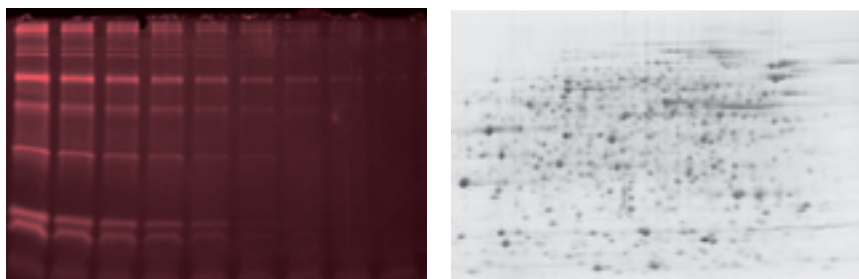
AdvanStain Scarlet offers the convenience of a fast protocol, provides excellent sensitivity, and exhibits lower background than other fluorescent stains.

### Fast Protocol, Excellent Sensitivity



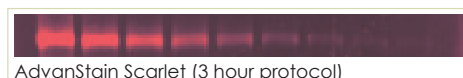
**AdvanStain Scarlet outperforms both Coomassie blue and SYPRO® Ruby in time and sensitivity.** Gels were stained with AdvanStain Scarlet, SYPRO Ruby, or Coomassie blue stain, according to the manufacturers' protocols and imaged on a CCD imager.

### Stain 1D and 2D Gels

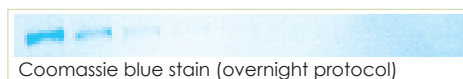


**AdvanStain Scarlet stains 1D and 2D gels** in less than 3 hours, with high sensitivity, low background, and no speckling.

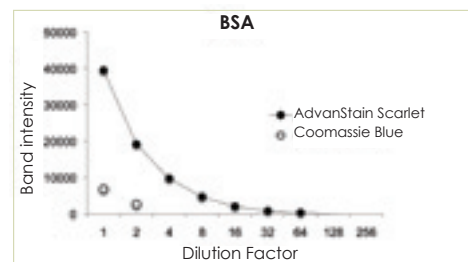
#### BSA



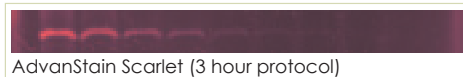
AdvanStain Scarlet (3 hour protocol)



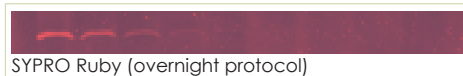
Coomassie blue stain (overnight protocol)



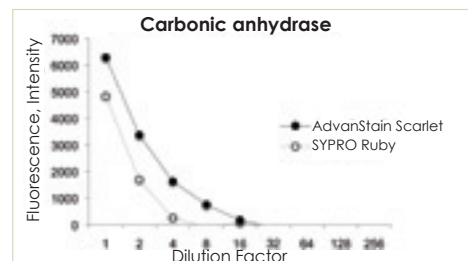
#### Carbonic Anhydrase



AdvanStain Scarlet (3 hour protocol)



SYPRO Ruby (overnight protocol)

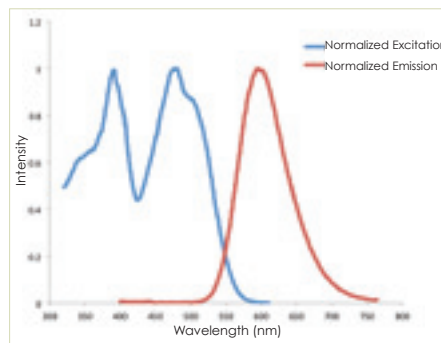
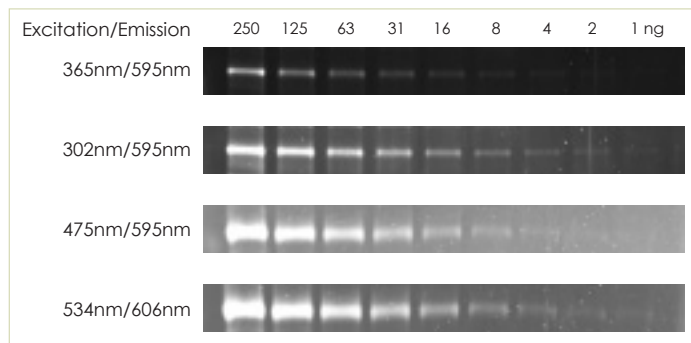


# AdvanStain™ Scarlet™

Fluorescent total protein stain for gels and blots



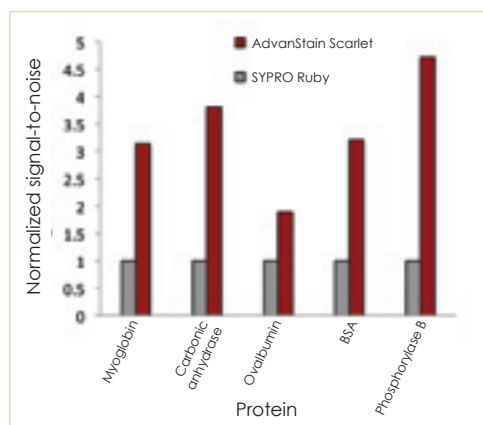
Compatible with Multiple Imaging Systems



Excitation and Emission Spectra of AdvanStain Scarlet

**Versatility in imaging.** A gel containing a serial dilution of BSA protein was stained with AdvanStain Scarlet and imaged on a CCD imaging system using a variety of excitation and emission conditions.

Superior Signal to Noise



**AdvanStain Scarlet provides a higher signal-to-noise ratio than SYPRO Ruby.** Serial dilutions of several proteins were separated on duplicate 1D gels stained with either AdvanStain Scarlet or SYPRO Ruby, according to each manufacturer's instructions. For each protein, signal-to-noise values were normalized to the value obtained for the protein on the SYPRO Ruby-stained gel. AdvanStain Scarlet provided a signal-to-noise ratio at least 2-times greater than SYPRO Ruby for each protein. The lower background observed with AdvanStain Scarlet is responsible for the higher signal-to-noise ratio, increasing confidence in quantitation of low-abundance bands and spots.

# AdvanStain™ Scarlet™

## Fluorescent total protein stain for gels and blots

**AdvanStain Scarlet** is sensitive, quantitative, non-toxic, and fully compatible with downstream applications including Western blotting and mass spectrometry.

### Features

- **SENSITIVE** – detect less than a nanogram of protein per spot
- **CONVENIENT** – simple 3-hour protocol
- **FLEXIBLE** – stain gels or membranes
- **REVERSIBLE** – destain for downstream Western blotting or mass spectrometry
- **NO SPECKLING** – clean background and no speckling for better data
- **SAFE** – biodegradable and contains no heavy metals for increased safety and simple disposal
- **COMPATIBLE** – image with any laser or CCD imaging system. Compatible excitation wavelengths include green (543, 532 nm), blue (488 nm), violet (405 nm) and UV (302, 365 nm). Maximum emission wavelength is 610 nm.

### Ordering Information

Catalog Number	Product	Size
K-11072-B50	AdvanStain Scarlet Kit, Sufficient for staining 20 minigels	5 ml
K-11072-C25	AdvanStain Scarlet Kit, Sufficient for staining 100 minigels	25 ml

### Related Products

K-02101-010	Afyon™ SDS-PAGE Sample Preparation Kit		10 rxns
K-02101-025	Afyon™ SDS-PAGE Sample Preparation Kit		25 rxns
K-12045-D20	WesternBright™ ECL Western Blotting HRP Substrate	For 2000 cm <sup>2</sup> membrane	200 ml
K-12045-D50	WesternBright™ ECL Western Blotting HRP Substrate	For 5000 cm <sup>2</sup> membrane	500 ml
L-08001-010	Low-Fluorescence PVDF Transfer Membrane	7 x 9 cm	10 sheets
L-08002-010	Nitrocellulose Transfer Membrane 0.45 µm	8 x 10 cm	10 sheets
L-08003-010	Nitrocellulose Transfer Membrane 0.22 µm	8 x 10 cm	10 sheets

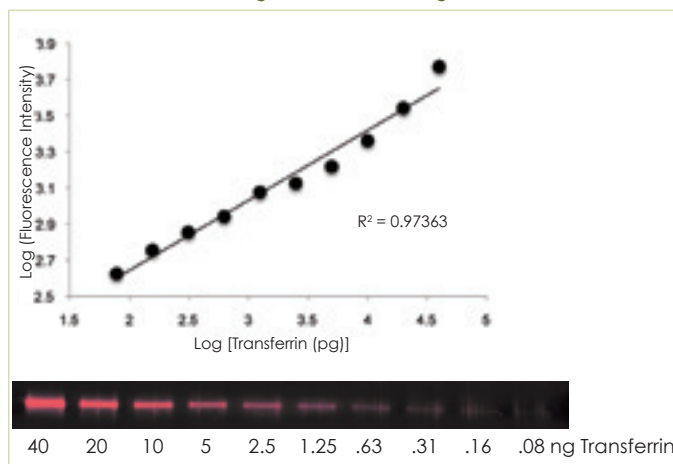
### Advansta Corporation

1505 Adams Drive, Suite B1 | Menlo Park, CA 94025

Tel: 650.325.1980 | Fax: 650.325.1904 | Email: [sales@advansta.com](mailto:sales@advansta.com)

Product information: [www.advantastain.com/AdvanStain\\_Scarlet](http://www.advantastain.com/AdvanStain_Scarlet)

### High Sensitivity, Large Dynamic Range



**Quantitative staining with AdvanStain Scarlet.** A gel containing serial dilutions of transferrin protein was stained with AdvanStain Scarlet and imaged on a CCD imaging system (excitation 534 nm, emission 606 nm). Less than 1 ng of protein per band can be detected, and signal is linear more than 2 orders of magnitude.

Copyright © 2012-2014 Advansta. All rights reserved. The Advansta logo is a registered trademark of the Company. AdvanStain™ Scarlet™, WesternBright™ and Afyon™ are trademarks of the Company. SYPRO® is a registered trademark of Life Technologies. All other trademarks, service marks and trade names appearing in this brochure are the property of their respective owners.

[www.advantastain.com](http://www.advantastain.com)

