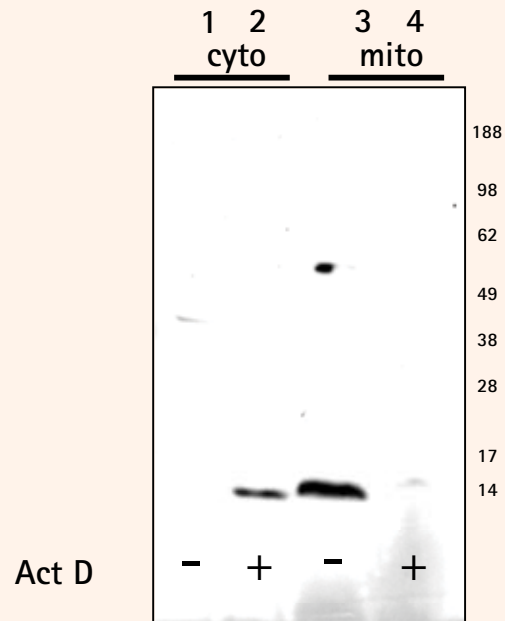


Selectively Enrich for Mitochondrial and Cytosolic Proteomes

The Cytosol/Mitochondria Fractionation Kit (Cat. No. QIA88) is designed for extraction of cellular proteomes from mammalian cells. The simple procedure utilizes unique extraction buffers to deliver two distinct proteins fractions: a mitochondrial fraction and a cytosolic fraction. The procedure is easy to perform and does not rely upon ultracentrifugation. Protein fractions are suitable for many downstream applications including 1D and 2D gel electrophoresis, immunoblotting, and apoptotic and signal transduction-related translocation studies.



Apoptosis associated relocation of cytochrome C from mitochondria to the cytoplasm.

10^7 Jurkat cells were treated (lanes 2 and 4) or untreated (lanes 1 and 3) for 7 h with $1 \mu\text{M}$ of Actinomycin D (Cat. No. 114666). Cells were harvested and processed using the Cytosol/Mitochondria Fractionation Kit (Cat. No. QIA88). $50 \mu\text{g}$ of total protein from each fraction was loaded onto a denaturing 8–12% SDS PAGE gel. The proteins were transferred to nitrocellulose and blotted with Anti-Cytochrome c Mouse mAb (Cat. No. AP1029) at $1 \mu\text{g/ml}$. Lanes 1 and 2: Cytosolic extract. Lanes 3 and 4: Mitochondrial extract.

EMD Biosciences

Calbiochem | Novabiochem | Novagen

Orders:

Phone: 800 854 3417

Fax: 800 776 0999

Technical Service:

Phone: 800 628 8470

www.emdbiosciences.com

Product Size	Size	Cat.No.	Price
Cytosol/Mitochondria Fractionation Kit	1 kit	QIA88	\$279



Additional Kits and Reagents for Sample Preparation for Proteome Analysis

Product	Size	Cat.No.	Price
D-Tube™ Dialyzer Maxi, MWCO 12–14 kDa	1 kit (10 tubes)	71510-3	\$88
D-Tube™ Dialyzer Maxi, MWCO 3.5 kDa	1 kit (10 tubes)	71508-3	\$88
D-Tube™ Dialyzer Maxi, MWCO 6–8 kDa	1 kit (10 tubes)	71509-3	\$88
D-Tube™ Dialyzer Midi, MWCO 3.5 kDa	1 kit (10 tubes)	71506-3	\$72
D-Tube™ Dialyzer Midi, MWCO 6–8 kDa	1 kit (10 tubes)	71507-3	\$72
D-Tube™ Dialyzer Mini, MWCO 12–14 kDa	1 kit (10 tubes)	71505-3	\$47
D-Tube™ Dialyzer Mini, MWCO 6–8 kDa	1 kit (10 tubes)	71504-3	\$47
D-Tube™ Electroelution Accessory Kit	1 kit	71511-3	\$45
PhosphoSafe™ Extraction Reagent	25 ml	71296-3	\$64
PhosphoSafe™ Extraction Reagent	5 x 25 ml	71296-4	\$254
ProteoEnrich™ ATP-Binders™ Kit	1 kit	71438-3	\$314
NEW ProteoEnrich™ CAT-X Kit	1 kit	71532-3	\$144
NEW ProteoEnrich™ CAT-X SEC Kit	1 kit	71539-3	\$177
ProteoExtract® Albumin Removal Kit	1 kit	122640	\$170
ProteoExtract® Albumin Removal Kit, Maxi	1 kit	122641	\$221
ProteoExtract® Albumin/IgG Removal Kit	1 kit	122642	\$197
ProteoExtract® Albumin/IgG Removal Kit, Maxi	1 kit	122643	\$252
ProteoExtract® All-in-One Trypsin Digestion Kit	1 kit	650212	\$227
ProteoExtract® Complete Bacterial Proteome	1 kit	539770	\$244
ProteoExtract® Complete Mammalian Proteome Extraction Kit	1 kit	539779	\$254
ProteoExtract® Complete Yeast Proteome Extraction Kit	1 kit	539775	\$254
ProteoExtract® Native Membrane Protein Extraction Kit	1 kit	444810	\$283
ProteoExtract® Partial Mammalian Proteome Extraction Kit	1 kit	539789	\$298
NEW ProteoExtract® Phosphoproteome Profiler Kit	1 kit	539181	\$283
ProteoExtract® Partial Yeast Proteome Extraction Kit	1 kit	539785	\$298
ProteoExtract® Phosphopeptide Capture Kit	1 kit	525250	\$232
ProteoExtract® Protein Precipitation Kit	1 kit	539180	\$205
ProteoExtract® Subcellular Proteome Extraction Kit	1 kit	539790	\$318
NEW ProteoExtract® Subcellular Proteome Extraction Kit, Mini	1 kit	539791	\$185
NEW ProteoExtract® Tryptic Cleavage Modification Kit	1 kit	539182	\$130

Novagen® & Calbiochem®

Sample Preparation

Tools for Protein Research

The comprehensive resource for all your protein sample preparation needs



Call us or visit our website.

Order your FREE copy today!
Now Available

For more information on Protein Sample Preparation, visit
www.emdbiosciences.com/proteoextract

Also, check out our resources for Phosphoprotein Research:
www.emdbiosciences.com/phosphoprotein