

# Flp-In™ System

Version C  
021402  
25-0306

## Flp-In™ System

**For Generating Stable Mammalian Expression Cell  
Lines by Flp Recombinase-Mediated Integration**

Catalog nos. K6010-01, K6010-02



[www.invitrogen.com](http://www.invitrogen.com)  
[tech\\_service@invitrogen.com](mailto:tech_service@invitrogen.com)



# Table of Contents

Table of Contents .....	iii
Important Information .....	v
Accessory Products .....	vii
<b>Introduction.....</b>	<b>1</b>
The Flp-In™ System .....	1
<b>Methods.....</b>	<b>6</b>
Propagation and Maintenance of Plasmids.....	6
Generating Stable Flp-In™ Host Cell Lines.....	8
Generating Stable Flp-In™ Expression Cell Lines.....	14
<b>Appendix .....</b>	<b>19</b>
Recipes .....	19
Zeocin™ .....	20
pFRT/ <i>lacZeo</i> Vector .....	22
pOG44 Vector.....	24
Technical Service .....	26
Purchaser Notification.....	28
Product Qualification .....	31
References .....	32



# Important Information

## Introduction

The Flp-In™ System manual is supplied with the kits listed below. The Core System includes vectors and primers for sequencing. The Complete System includes the Core System plus selection agents. See below for a detailed description of the contents of each Flp-In™ System.

Flp-In™ System	Catalog no.
Complete System	K6010-01
Core System	K6010-02

## Shipping/Storage

The Flp-In™ Core System is shipped at room temperature. Store at -20°C.

The Flp-In™ Complete System is shipped in 2 boxes. Store as described below:

Box 1 contains vectors, primers, and hygromycin and is shipped at room temperature. Upon receipt, remove the vectors and primers and store at -20°C. The bottle of hygromycin B liquid should be stored at +4°C protected from exposure to light.

Box 2 contains Zeocin™ and is shipped on blue ice. Store at -20°C protected from exposure to light.

## Kit Contents

Both the Flp-In™ Complete and the Flp-In™ Core Systems include the following vectors and sequencing primers. Store at -20°C.

Reagent	Amount	Comments
pFRT/ <i>lacZeo</i>	20 g, lyophilized in TE, pH 8.0	Flp-In™ target site vector for creation of stable mammalian cell lines containing an integrated <u>F</u> lp <u>R</u> ecombination <u>T</u> arget (FRT) site
pOG44	20 g, lyophilized in TE, pH 8.0	Vector for expression of the Flp recombinase
CMV Forward Primer (21-mer)	2 g (306 pmoles), lyophilized in TE, pH 8.0	5'-CGCAAATGGGCGGTAGGCGTG-3'
BGH Reverse Primer (18-mer)	2 g (358 pmoles), lyophilized in TE, pH 8.0	5'-TAGAAGGCACAGTCGAGG-3'

## Expression Vectors

Each Flp-In™ Complete and Core System also includes an expression vector for cloning your gene of interest and a corresponding positive control vector containing the *CAT* gene as described below. Refer to the vector manual for specific information pertaining to the expression vector. Store at -20°C.

Vector	Amount
pcDNA5/FRT	20 g, lyophilized in TE, pH 8.0
pcDNA5/FRT/CAT	20 g, lyophilized in TE, pH 8.0

*continued on next page*

## Important Information, continued

---

### Selection Agents

In addition to the vectors and primers provided in the Flp-In™ Core System, the Flp-In™ Complete System also includes the following selection agents. Zeocin™ is supplied in 8 x 1.25 ml aliquots at a concentration of 100 mg/ml. Store the Zeocin™ liquid at -20°C protected from exposure to light. Hygromycin B is supplied in a 10 ml aliquot at a concentration of 100 mg/ml. Store the hygromycin B liquid at +4°C protected from exposure to light.

Reagent	Amount Supplied	Comments
Zeocin™	1 g	Selection agent for the pFRT/ <i>lacZeo</i> plasmid
Hygromycin B	1 g	Selection agent for the pcDNA5/FRT expression plasmid

---

## Accessory Products

### Additional Products

Many of the reagents in the Flp-In™ System as well as additional reagents that may be used with the Flp-In™ System are available separately from Invitrogen. Ordering information is provided below.

Item	Amount	Catalog no.
pFRT/ <i>lacZeo</i>	20 g, lyophilized	V6015-20
pFRT/ <i>lacZeo2</i>	20 g, lyophilized	V6022-20
pOG44	20 g, lyophilized	V6005-20
T7 Promoter Primer	2 g, lyophilized	N560-02
Zeocin™	1 g	R250-01
	5 g	R250-05
Hygromycin B	1 g	R220-05
β-Gal Assay Kit	100 reactions	K1455-01
β-Gal Staining Kit	1 kit	K1465-01
Calcium Phosphate Transfection Kit	75 reactions	K2780-01
CAT Antiserum*	50 l	R902-25

\*The amount supplied is sufficient to perform 25 Western blots using 10 ml working solution per reaction

### Flp-In™ Expression Vectors

Additional Flp-In™ expression vectors are available from Invitrogen. For more information about the features of each vector or to download a manual for a vector, refer to our World Wide Web site ([www.invitrogen.com](http://www.invitrogen.com)) or call Technical Service (see page 26).

Product	Amount	Catalog no.
pcDNA5/FRT/V5-His TOPO® TA Expression Kit	1 kit	K6020-01
pSecTag/FRT/V5-His TOPO® TA Expression Kit	1 kit	K6025-01
pEF5/FRT/V5 Directional TOPO® Expression Kit	1 kit	K6035-01
pEF5/FRT/V5-DEST Gateway™ Vector Pack	6 g	V6020-20

*continued on next page*

## Accessory Products, continued

### Flp-In™ Host Cell Lines

For your convenience, Invitrogen has available several mammalian Flp-In™ host cell lines that stably express the *lacZ-Zeocin*™ fusion gene from pFRT/*lacZeo* or pFRT/*lacZeo2*. Each cell line contains a single integrated FRT site as confirmed by Southern blot analysis. The cell lines should be maintained in medium containing Zeocin™. For more information, see our World Wide Web site ([www.invitrogen.com](http://www.invitrogen.com)) or call Technical Service (see page 26).

Cell Line	Amount	Catalog no.
Flp-In™ -293	3 x 10 <sup>6</sup> cells, frozen	R750-07
Flp-In™ -CV-1	3 x 10 <sup>6</sup> cells, frozen	R752-07
Flp-In™ -CHO	3 x 10 <sup>6</sup> cells, frozen	R758-07
Flp-In™ -BHK	3 x 10 <sup>6</sup> cells, frozen	R760-07
Flp-In™ -3T3	3 x 10 <sup>6</sup> cells, frozen	R761-07
Flp-In™ -Jurkat	3 x 10 <sup>6</sup> cells, frozen	R762-07



# Introduction

## The Flp-In™ System

---

### Overview

The Flp-In™ System allows integration and expression of your gene of interest in mammalian cells at a specific genomic location. The Flp-In™ System involves introduction of a Flp Recombination Target (FRT) site into the genome of the mammalian cell line of choice. An expression vector containing your gene of interest is then integrated into the genome via Flp recombinase-mediated DNA recombination at the FRT site (O'Gorman *et al.*, 1991). The major components of the Flp-In™ System include:

A Flp-In™ target site vector, pFRT/*lacZeo*, for generation of a host cell line containing an integrated FRT site (see pages 22-23 for more information)

An expression plasmid containing a FRT site linked to the hygromycin resistance gene for Flp recombinase-mediated integration and selection of a stable cell line expressing your gene of interest under the control of the human cytomegalovirus (CMV) immediate-early enhancer/promoter

A Flp recombinase expression plasmid, pOG44, for expression of the Flp recombinase under the control of the human CMV promoter (see pages 24-25 for further information)

A control expression plasmid containing the chloramphenicol acetyl transferase (*CAT*) gene, which when cotransfected with pOG44 into your Flp-In™ host cell line, expresses CAT

For specific information on the expression vector and the corresponding positive control vector containing the *CAT* gene, refer to the pcDNA5/FRT vector manual.

---

### Advantages of the Flp-In™ System

Use of the Flp-In™ System to generate stable expression cell lines provides a number of advantages as described below:

Once the Flp-In™ host cell line containing an integrated FRT site has been created, subsequent generation of Flp-In™ cell lines expressing the gene(s) of interest is rapid and efficient.

The Flp-In™ System allows the generation of isogenic stable cell lines.

The Flp-In™ System permits polyclonal selection of stable expression cell lines.

---

*continued on next page*

# The Flp-In™ System, continued

---

## Description of the Flp-In™ System

The Flp-In™ System streamlines the generation of stable mammalian expression cell lines by taking advantage of a *Saccharomyces cerevisiae*-derived DNA recombination system. This DNA recombination system uses a recombinase (Flp) and site-specific recombination (Craig, 1988; Sauer, 1994) to facilitate integration of the gene(s) of interest into a specific site in the genome of mammalian cells.

In the Flp-In™ System, three different vectors are used to generate isogenic stable mammalian cells lines expressing your gene(s) of interest. The first major component of the Flp-In™ System is the pFRT/*lacZeo* target site vector that is used to generate a Flp-In™ host cell line. The vector contains a *lacZ-Zeocin*™ fusion gene whose expression is controlled by the SV40 early promoter (see the **Appendix**, pages 22-23 for more information). A FRT site has been inserted just downstream of the ATG initiation codon of the *lacZ-Zeocin*™ fusion gene. The FRT site (see page 4 for more information) serves as the binding and cleavage site for the Flp recombinase. The pFRT/*lacZeo* plasmid is transfected into the mammalian cell line of interest and cells are selected for Zeocin™ resistance. Zeocin™-resistant clones are screened to identify those containing a single integrated FRT site. The resulting Flp-In™ host cell line contains an integrated FRT site and expresses the *lacZ-Zeocin*™ fusion gene (see the figure on the next page). **Note:** Integration of the pFRT/*lacZeo* plasmid into the genome is random.

The second major component of the Flp-In™ System is the pcDNA5/FRT expression vector into which the gene of interest will be cloned. Expression of the gene of interest is controlled by the human CMV promoter. The vector also contains the hygromycin resistance gene with a FRT site embedded in the 5' coding region. The hygromycin resistance gene lacks a promoter and the ATG initiation codon. For more information about the pcDNA5/FRT vector, refer to the vector manual.

The third major component of the Flp-In™ System is the pOG44 plasmid which constitutively expresses the Flp recombinase (Broach *et al.*, 1982; Broach and Hicks, 1980; Buchholz *et al.*, 1996) under the control of the human CMV promoter. For more information about pOG44 and the *FLP* gene, see the **Appendix**, pages 24-25.

The pOG44 plasmid and the pcDNA5/FRT vector containing your gene of interest are cotransfected into the Flp-In™ host cell line. Upon cotransfection, the Flp recombinase expressed from pOG44 mediates a homologous recombination event between the FRT sites (integrated into the genome and on pcDNA5/FRT) such that the pcDNA5/FRT construct is inserted into the genome at the integrated FRT site (see the figure on the next page). Insertion of pcDNA5/FRT into the genome at the FRT site brings the SV40 promoter and the ATG initiation codon (from pFRT/*lacZeo*) into proximity and frame with the hygromycin resistance gene, and inactivates the *lacZ-Zeocin*™ fusion gene. Thus, stable Flp-In™ expression cell lines can be selected for hygromycin resistance, Zeocin™ sensitivity, lack of  $\beta$ -galactosidase activity, and expression of the recombinant protein of interest (see the figure on the next page).

---

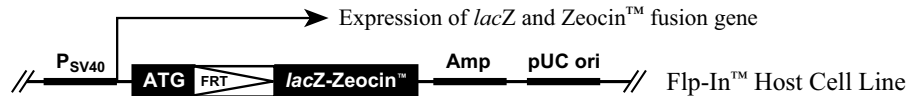
*continued on next page*

# The Flp-In™ System, continued

## Diagram of the Flp-In™ System

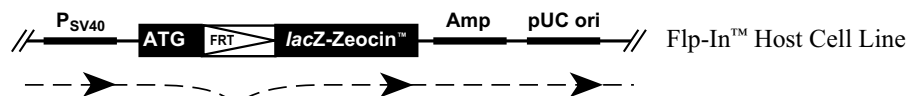
The figure below illustrates the major features of the Flp-In™ System as described on the previous page. For a brief description about FRT sites and the mechanism of Flp-mediated recombination, see the next page and published reviews (Craig, 1988; Sauer, 1994).

1. pFRT/*lacZeo* is stably transfected into the mammalian cells of interest to generate the Zeocin™-resistant Flp-In™ Host Cell Line(s)

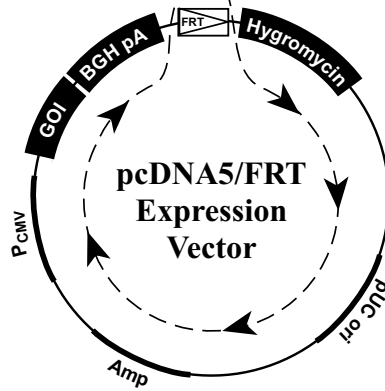


2. The pcDNA5/FRT expression vector containing your gene of interest (GOI) is cotransfected with pOG44 into the Flp-In™ Host Cell Line.

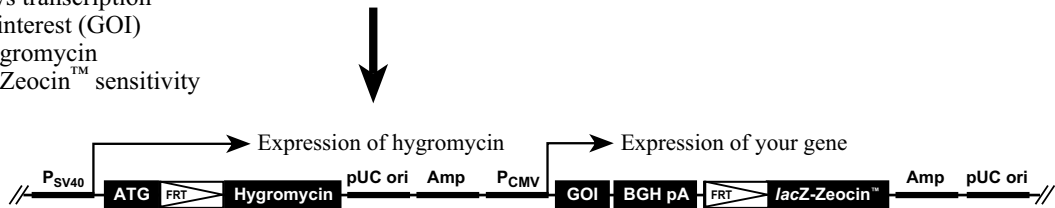
↓ + pOG44  
+ pcDNA5/FRT



3. The Flp recombinase expressed from pOG44 catalyzes a homologous recombination event between the FRT sites in the host cells and the pcDNA5/FRT expression vector.



4. Integration of the expression construct allows transcription of the gene of interest (GOI) and confers hygromycin resistance and Zeocin™ sensitivity to the cells.



Flp-In™ Expression Cell Line

*continued on next page*

# The Flp-In™ System, continued

## Flp Recombinase-Mediated DNA Recombination

In the Flp-In™ System, integration of your pcDNA5/FRT expression construct into the genome occurs via Flp recombinase-mediated intermolecular DNA recombination. The hallmarks of Flp-mediated recombination are listed below.

Recombination occurs between specific FRT sites (see below) on the interacting DNA molecules

Recombination is conservative and requires no DNA synthesis; the FRT sites are preserved following recombination and there is minimal opportunity for introduction of mutations at the recombination site

Strand exchange requires only the small 34 bp minimal FRT site (see below)

For more information about the Flp recombinase and conservative site-specific recombination, refer to published reviews (Craig, 1988; Sauer, 1994).

**Note:** If your cell line contains multiple integrated FRT sites, Flp-mediated intramolecular recombination may also occur. Intramolecular recombination may result in:

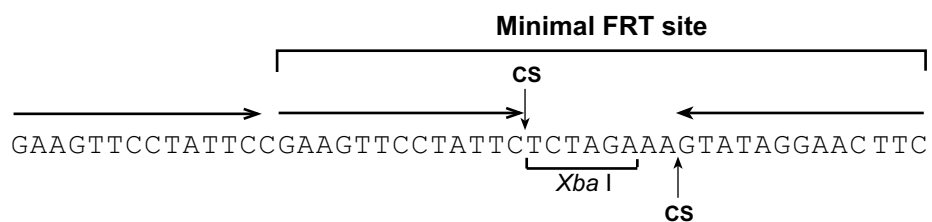
Excision of the intervening DNA if the FRT sites are directly repeated (*i.e.* integration of multiple FRT sites on the same DNA strand)

DNA inversion if the sites are in opposing orientations

Deletion of genomic sequences

## FRT Sites

As described above, Flp recombinase-mediated recombination occurs between specific FRT sites. The FRT site, originally isolated from *Saccharomyces cerevisiae*, serves as a binding site for Flp recombinase and has been well-characterized (Gronostajski and Sadowski, 1985; Jayaram, 1985; Sauer, 1994; Senecoff *et al.*, 1985). The minimal FRT site consists of a 34 bp sequence containing two 13 bp imperfect inverted repeats separated by an 8 bp spacer that includes an *Xba* I restriction site (see figure below). An additional 13 bp repeat is found in most FRT sites, but is not required for cleavage (Andrews *et al.*, 1985). While Flp recombinase binds to all three of the 13 bp repeats, strand cleavage actually occurs at the boundaries of the 8 bp spacer region (see figure below for cleavage sites (CS)) (Andrews *et al.*, 1985; Senecoff *et al.*, 1985).



CS = cleavage site

*continued on next page*

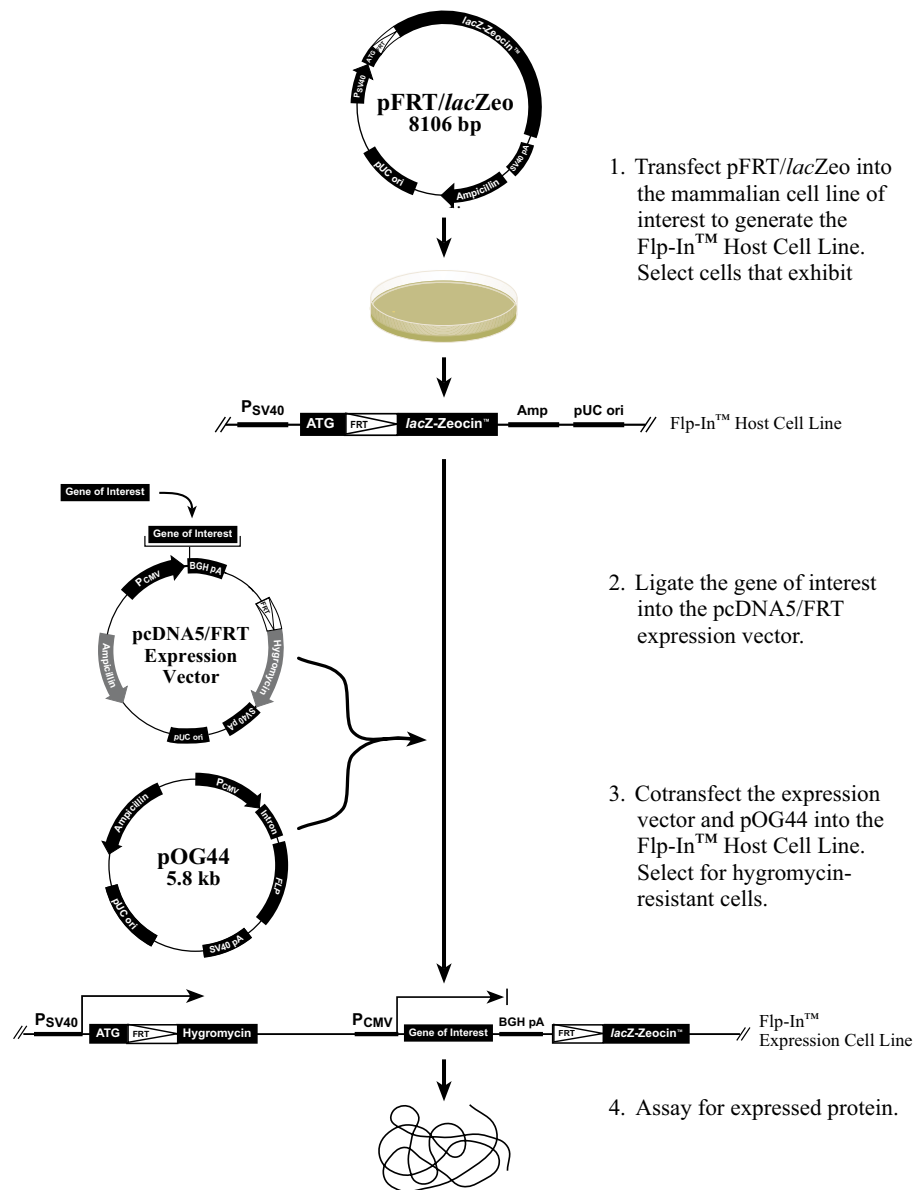
# The Flp-In™ System, continued

## Experimental Outline

To create a stable Flp-In™ cell line expressing your gene of interest at a site-specific genomic locus, you will perform the following steps:

1. Transfect the Flp-In™ target site vector, pFRT/*lacZeo*, into the mammalian cell line of choice to generate your Flp-In™ host cell line(s) (see figure below).
2. Clone your gene of interest into the pcDNA5/FRT expression vector.
3. Co-transfect your pcDNA5/FRT construct and the Flp recombinase expression vector, pOG44, into your Flp-In™ host cell line to generate your Flp-In™ expression cell line (see figure below).
4. Assay for expression of your recombinant protein of interest.

**Note:** The positive control vector containing the *CAT* gene can be cotransfected into your Flp-In™ host cell line with pOG44 to demonstrate that the system is working properly.



# Methods

## Propagation and Maintenance of Plasmids

---

### Introduction

The following section contains guidelines for maintaining and propagating the pFRT/*lacZeo* and pOG44 vectors. For information about maintaining and propagating the pcDNA5/FRT expression vector, refer to the vector manual.

---

### General Molecular Biology Techniques

For assistance with *E. coli* transformations, restriction enzyme analysis, DNA biochemistry, and plasmid preparation, refer to *Molecular Cloning: A Laboratory Manual* (Sambrook *et al.*, 1989) or *Current Protocols in Molecular Biology* (Ausubel *et al.*, 1994).

---

### *E. coli* Strain

Many *E. coli* strains are suitable for the propagation of the pFRT/*lacZeo* and pOG44 vectors. We recommend that you propagate the pFRT/*lacZeo* and pOG44 vectors in *E. coli* strains that are recombination deficient (*recA*) and endonuclease A deficient (*endA*).

For your convenience, TOP10 *E. coli* are available as chemically competent or electrocompetent cells from Invitrogen.

Item	Quantity	Catalog no.
One Shot <sup>®</sup> TOP10 (chemically competent cells)	21 x 50 l	C4040-03
One Shot <sup>®</sup> TOP10 Electrocomp <sup>™</sup> (electrocompetent cells)	21 x 50 l	C4040-52

---

### Transformation Method

You may use any method of choice for transformation. Chemical transformation is the most convenient for many researchers. Electroporation is the most efficient and the method of choice for large plasmids.

---

### Maintenance of Plasmids

The pFRT/*lacZeo* and pOG44 vectors contain the ampicillin gene to allow selection of the plasmid using ampicillin (see pages 22-25 for more information about each vector).

To propagate and maintain the pFRT/*lacZeo* and pOG44 plasmids, we recommend using the following procedure:

1. Resuspend each vector in 20 l sterile water to prepare a 1 g/ l stock solution. Store the stock solution at -20°C.
  2. Use the stock solution to transform a *recA*, *endA* *E. coli* strain like TOP10, DH5 $\alpha$ , JM109, or equivalent.
  3. Select transformants on LB agar plates containing 50 to 100 g/ml ampicillin. For fast and easy microwaveable preparation of Low Salt LB agar containing ampicillin, imMedia<sup>™</sup> Amp Agar (Catalog no. Q601-20) is available from Invitrogen. For more information, call Technical Service (see page 26).
  4. Prepare a glycerol stock of each plasmid for long-term storage (see the next page).
- 

*continued on next page*

# Propagation and Maintenance of Plasmids, continued

---

## Preparing a Glycerol Stock

Once you have identified the correct clone, be sure to purify the colony and make a glycerol stock for long-term storage. It is also a good idea to keep a DNA stock of your plasmid at  $-20^{\circ}\text{C}$ .

1. Streak the original colony out on an LB plate containing 50  $\mu\text{g/ml}$  ampicillin. Incubate the plate at  $37^{\circ}\text{C}$  overnight.
  2. Isolate a single colony and inoculate into 1-2 ml of LB containing 50  $\mu\text{g/ml}$  ampicillin.
  3. Grow the culture to mid-log phase ( $\text{OD}_{600} = 0.5-0.7$ ).
  4. Mix 0.85 ml of culture with 0.15 ml of sterile glycerol and transfer to a cryovial.
  5. Store at  $-80^{\circ}\text{C}$ .
-

# Generating Stable Flp-In™ Host Cell Lines

## Introduction

Before you can create a stable Flp-In™ cell line(s) expressing your gene of interest, you will first need to generate a stable mammalian cell line containing an integrated FRT site (Flp-In™ host cell line). The following section provides guidelines and instructions to generate stable Flp-In™ host cell lines by transfection using the pFRT/*lacZeo* plasmid. For a map and a description of the features of pFRT/*lacZeo*, refer to the **Appendix**, pages 22-23.



Several Flp-In™ host cell lines which stably express the *lacZ-Zeocin*™ fusion gene from pFRT/*lacZeo* or pFRT/*lacZeo2* and which contain a single integrated FRT site are available from Invitrogen (see table below). If you wish to express your gene of interest in one of the cell lines listed below, you may want to use one of Invitrogen's Flp-In™ cell lines as the host to establish your stable expression cell line. For more information, refer to our World Wide Web site ([www.invitrogen.com](http://www.invitrogen.com)) or call Technical Service (see page 26).

Cell Line	Source	Catalog no.
Flp-In™-293	Human embryonic kidney	R750-07
Flp-In™-CV-1	African Green Monkey kidney	R752-07
Flp-In™-CHO	Chinese Hamster ovary	R758-07
Flp-In™-BHK	Baby hamster kidney	R760-07
Flp-In™-3T3	Mouse (NIH Swiss) embryonic fibroblast	R761-07
Flp-In™-Jurkat	Human T-cell leukemia	R762-07



We have observed down-regulation of the viral CMV promoter and subsequent loss of gene expression when pcDNA5/FRT-based expression constructs are introduced into Flp-In™-3T3 or Flp-In™-BHK cells. If you will be cloning your gene of interest into a pcDNA5-FRT-based expression construct, we recommend that you **do not** use 3T3 or BHK cells to create your Flp-In™ host cell line.

Alternatively, if you prefer to use 3T3 or BHK cells to create your Flp-In™ host cell line, we recommend that you clone your gene of interest into a pEF5/FRT-based expression plasmid (e.g. pEF5/FRT/V5-D-TOPO® or pEF5/FRT/V5-DEST). Loss of gene expression due to down-regulation of the promoter is not observed in these cell lines when using pEF5/FRT-based expression constructs. For more information about the pEF5/FRT/V5-D-TOPO® or pEF5/FRT/V5-DEST vectors, refer to our Web site ([www.invitrogen.com](http://www.invitrogen.com)) or call Technical Service (see page 26).

## Plasmid Preparation

Plasmid DNA for transfection into eukaryotic cells must be very clean and free from phenol and sodium chloride. Contaminants will kill the cells, and salt will interfere with lipid complexing, decreasing transfection efficiency. We recommend isolating DNA using the S.N.A.P.™ MiniPrep Kit (10-15 g DNA, Catalog no. K1900-01), the S.N.A.P.™ MidiPrep Kit (10-200 g DNA, Catalog no. K1910-01) or CsCl gradient centrifugation.

*continued on next page*



# Generating Stable Flp-In™ Host Cell Lines, continued

---

## Methods of Transfection

For established cell lines (*e.g.* HeLa, COS-1), consult original references or the supplier of your cell line for the optimal method of transfection. We recommend that you follow exactly the protocol for your cell line. Pay particular attention to medium requirements, when to pass the cells, and at what dilution to split the cells. Further information is provided in *Current Protocols in Molecular Biology* (Ausubel *et al.*, 1994).

Methods for transfection include calcium phosphate (Chen and Okayama, 1987; Wigler *et al.*, 1977), lipid-mediated (Felgner *et al.*, 1989; Felgner and Ringold, 1989) and electroporation (Chu *et al.*, 1987; Shigekawa and Dower, 1988). Invitrogen offers the Calcium Phosphate Transfection Kit (Catalog no. K2780-01) and Lipofectamine™ 2000 Reagent (Catalog no. 11668-027) for mammalian cell transfection. For more information, refer to our World Wide Web site ([www.invitrogen.com](http://www.invitrogen.com)) or call Technical Service (see page 26).

---

## Zeocin™

The pFRT/*lacZeo* plasmid contains a *lacZ-Zeocin™* fusion gene under the control of the SV40 early promoter. Expression of the *lacZ-Zeocin™* fusion gene allows selection of stable integrants using Zeocin™ antibiotic. The resulting stable integrants can then be screened by assaying for expression of  $\beta$ -galactosidase. For more information about preparing and handling Zeocin™, refer to the **Appendix**, pages 20-21.

---



### Note

The pFRT/*lacZeo2* plasmid contains a *lacZ-Zeocin™* fusion gene under the control of a truncated SV40 promoter and is available separately from Invitrogen (see page vii for ordering information). The minimal activity of the promoter allows for isolation of clones that have FRT sites integrated in the most transcriptionally active genomic loci. For more information, refer to our Web site ([www.invitrogen.com](http://www.invitrogen.com)) or call Technical Service (see page 26).

---

## Determination of Zeocin™ Sensitivity

To successfully generate a stable cell line containing an integrated FRT site and expressing the LacZ-Zeocin™ fusion protein, you need to determine the minimum concentration of Zeocin™ required to kill your untransfected mammalian cell line. Typically, concentrations ranging from 50 to 1000  $\mu$ g/ml Zeocin™ are sufficient to kill most untransfected mammalian cell lines, with the average being 100 to 400  $\mu$ g/ml. We recommend that you test a range of concentrations (see protocol below) to ensure that you determine the minimum concentration necessary for your cell line. Refer to the **Appendix**, pages 20-21 for instructions on how to prepare and store Zeocin™.

1. Plate or split a confluent plate so the cells will be approximately 25% confluent. Prepare a set of 7 plates. Allow cells to adhere overnight.
  2. The next day, substitute culture medium with medium containing varying concentrations of Zeocin™ (0, 50, 100, 250, 500, 750, and 1000  $\mu$ g/ml Zeocin™).
  3. Replenish the selective media every 3-4 days, and observe the percentage of surviving cells.
  4. Note the percentage of surviving cells at regular intervals to determine the appropriate concentration of Zeocin™ that kills the cells within 1-2 weeks after addition of Zeocin™.
- 

*continued on next page*

## Generating Stable Flp-In™ Host Cell Lines, continued

---

### Effect of Zeocin™ on Sensitive and Resistant Cells

Zeocin™'s method of killing is quite different from other antibiotics including hygromycin, G418, and blasticidin. **Cells do not round up and detach from the plate.** Sensitive cells may exhibit the following morphological changes upon exposure to Zeocin™:

Vast increase in size, similar to the effects of cytomegalovirus infecting permissive cells

Abnormal cell shape

Presence of large empty vesicles in the cytoplasm (breakdown of the endoplasmic reticulum and Golgi apparatus, or other scaffolding proteins)

Breakdown of plasma and nuclear membrane (appearance of many holes in these membranes)

Eventually, these "cells" will completely break down and only "strings" of protein remain.

Zeocin™-resistant cells should continue to divide at regular intervals to form distinct colonies. There should not be any distinct morphological changes in Zeocin™-resistant cells when compared to cells not under selection with Zeocin™. For more information about Zeocin™ and its mechanism of action, refer to the **Appendix**, pages 20-21.

---

### Transfection Considerations

Once you have determined the appropriate Zeocin™ concentration to use for selection, you are ready to transfect the pFRT/*lacZeo* plasmid into your mammalian cell line of choice to generate the Flp-In™ host cell line and will need to consider the following factors:

**Insertion of the FRT site into the genome:** Integration of the pFRT/*lacZeo* plasmid containing the FRT site into the genome will occur randomly. Subsequent integration of the pcDNA5/FRT expression plasmid containing your gene of interest will occur through Flp recombinase-mediated recombination at the genomic FRT site.

**Transfection efficiency of your cell line:** The aim of most users will be to create stable cell lines containing a single integrated FRT site ("single integrants"; see **Note** on the next page). The probability of obtaining stable integrants containing a single FRT site or multiple FRT sites will depend upon the transfection efficiency of your cell line and the amount of DNA transfected. To increase the likelihood of obtaining single integrants, you will need to lower the transfection efficiency by limiting the amount of plasmid DNA that you transfect (see **Recommendation** on the next page).

**Selection of foci:** You will select for stable transfectants by plating cells in medium containing Zeocin™. Zeocin™-resistant foci can then be screened by Southern blot analysis to identify single integrants. To increase the chances of obtaining single integrants, we recommend that you pick foci from plates that have been transfected with the least amount of plasmid DNA.

**Chromosomal position effects:** Because integration of the pFRT/*lacZeo* plasmid into the genome occurs randomly, expression levels of the *lacZ-Zeocin™* fusion gene will be dependent on the transcriptional activity of the surrounding sequences at the integration site (*i.e.* chromosomal position effect). Once you have obtained single integrants, you may want to screen the Zeocin™-resistant clones for those expressing the highest  $\beta$ -galactosidase levels. Those clones expressing the highest levels of  $\beta$ -galactosidase should contain single FRT sites which have integrated into the most transcriptionally active regions.

**Antibiotic concentration:** Single integrants will express only a single copy of the *lacZ-Zeocin™* fusion gene and therefore, may be more sensitive to Zeocin™ selection than multiple integrants. If you have previously used your mammalian cell line for transfection and Zeocin™ selection, note that you may need to use lower concentrations of Zeocin™ to obtain single integrants.

---

*continued on next page*

## Generating Stable Flp-In™ Host Cell Lines, continued



### Note

If you want to increase the expression levels of your gene of interest in the cell line of choice, you may wish to generate a Flp-In™ host cell line containing multiple integrated FRT sites. In theory, cotransfection of your pcDNA5/FRT construct and pOG44 into these cells will allow integration of your gene of interest into multiple genomic loci. **Note that the presence of multiple integrated FRT sites in the genome may increase the occurrence of chromosomal rearrangements or unexpected recombination events in your host cell line.**



As mentioned previously, we recommend that you transfect your mammalian cell line with a limiting amount of pFRT/*lacZeo* plasmid. We generally use 250 ng to 2 μg of plasmid DNA per 4 x 10<sup>6</sup> cells for transfection, but the amount of plasmid DNA may vary due to the nature of the cell line, the transfection efficiency of your cells, and the method of transfection used. When transfecting your mammalian cell line of choice, we suggest that you try a range of plasmid DNA concentrations (e.g. 0.25, 0.5, 1, 2, 5 μg/ml DNA) to optimize transfection conditions for your cell line.

We generally use electroporation to transfect cells, but other methods of transfection are suitable. For a protocol to electroporate cells, refer to *Current Protocols in Molecular Biology*, Unit 9.3 (Ausubel *et al.*, 1994). Note that if you use calcium phosphate or lipid-mediated transfection methods, the amount of **total** DNA required for transfection is typically higher than for electroporation (usually between 10 and 20 μg DNA). Depending on the amount of pFRT/*lacZeo* plasmid that you use for transfection, you may need to supplement your plasmid DNA with carrier DNA (e.g. salmon sperm DNA).

### Possible Sites for Linearization of pFRT/*lacZeo*

To obtain stable transfectants, we recommend that you linearize the pFRT/*lacZeo* plasmid before transfection. While linearizing the vector may not improve the efficiency of transfection, it increases the chances that the vector does not integrate in a way that disrupts the ATG-FRT-*lacZ*-*Zeocin*™ cassette or other elements necessary for expression in mammalian cells. The table below lists unique sites that may be used to linearize your construct prior to transfection. Other restriction sites are possible.

**Note:** We generally use *Sca* I to linearize pFRT/*lacZeo*.

Enzyme	Restriction Site (bp)	Location	Supplier
<i>Tth</i> 111 I	125	Backbone	Many
<i>Apa</i> I	5617	Backbone	Invitrogen (Catalog no. 15440-019)
<i>Swa</i> I	6075	Backbone	New England Biolabs, Sigma, Takara
<i>Xmn</i> I	6487	Ampicillin gene	Many
<i>Sca</i> I	6606	Ampicillin gene	Invitrogen (Catalog no. 15436-017)
<i>Bsa</i> I	7021	Ampicillin gene	New England Biolabs
<i>Eam</i> 1105 I	7087	Ampicillin gene	AGS*, Fermentas, Takara
<i>Sap</i> I	8092	Backbone	New England Biolabs

\*Angewandte Gentechnologie Systeme

continued on next page

## Generating Stable Flp-In™ Host Cell Lines, continued

---

### Selection of Stable Integrants

Once you have determined the appropriate Zeocin™ concentration to use for selection, you can generate a stable cell line with pFRT/lacZeo.

1. Transfect mammalian cells with pFRT/lacZeo using the desired protocol. Remember to include a plate of untransfected cells as a negative control.
2. 24 hours after transfection, wash the cells and add fresh medium to the cells.
3. 48 hours after transfection, split the cells into fresh medium. Split the cells such that they are no more than 25% confluent. If the cells are too dense, the antibiotic will not kill the cells. Antibiotics work best on actively dividing cells.
4. Incubate the cells at 37°C for 2-3 hours until they have attached to the culture dish.
5. Remove the medium and add fresh medium containing Zeocin™ at the pre-determined concentration required for your cell line.
6. Feed the cells with selective medium every 3-4 days until foci can be identified.
7. Pick at least 20 Zeocin™-resistant foci and expand each clone to test for the number of integrated FRT sites. Isolate genomic DNA and use Southern blot analysis to distinguish between single and multiple integrants (see below and the next page). Select the single integrants and proceed to the next step.
8. Screen the single integrants for  $\beta$ -galactosidase activity (see the next page). Select those clones which exhibit the highest levels of  $\beta$ -galactosidase expression (if desired) to use as your Flp-In™ host cell line(s).
9. Once you have obtained a stable Flp-In™ host cell line, you can use this cell line to isolate a stable cell line expressing your gene of interest from the pcDNA5/FRT plasmid (see the next section). **Note:** The Flp-In™ host cell line should be maintained in medium containing the appropriate amount of Zeocin™ until generation of your Flp-In™ expression cell line.

### Isolation of Genomic DNA

Once you have obtained Zeocin™-resistant foci, you will need to expand the cells and isolate genomic DNA. You may use any standard protocol to isolate genomic DNA from your cells. Protocols may be found in *Current Protocols in Molecular Biology* (Ausubel *et al.*, 1994) or *Molecular Cloning: A Laboratory Manual* (Sambrook *et al.*, 1989). For easy isolation of genomic DNA, the Easy-DNA™ Kit (Catalog no. K1800-01) is available from Invitrogen. Call Technical Service for more information (see page 26).

---

*continued on next page*

# Generating Stable Flp-In™ Host Cell Lines, continued

---

## Screening Clones by Southern Blot Analysis

You can use Southern blot analysis to determine the number of integrated FRT sites present in each of your Zeocin™-resistant clones. When performing Southern blot analysis, you should consider the following factors:

**Probe:** We recommend that you use a fragment of the *lacZ* gene (100 to 500 bp) as the probe to screen your samples. Mammalian cells do not contain an endogenous *lacZ* gene, therefore, a *lacZ* probe should allow you to identify those clones which contain pFRT/*lacZeo* DNA. To label the probe, we generally use a standard random priming kit (e.g. Ambion, DECAprime II™ Kit, Catalog no. 1455). Other random priming kits are suitable.

**Restriction digest:** When choosing a restriction enzyme to digest the genomic DNA, we recommend choosing an enzyme that cuts at a single known site outside of the *lacZ* gene in the pFRT/*lacZeo* vector. Hybridization of the *lacZ* probe to digested DNA should then allow you to detect a single band containing the *lacZ* gene from pFRT/*lacZeo*. We generally use *Hind* III to digest genomic DNA from the Zeocin™-resistant clones. pFRT/*lacZeo* contains a single *Hind* III site within the FRT site.

**Protocol:** You may use any Southern blotting protocol of your choice. Refer to *Current Protocols in Molecular Biology* (Ausubel *et al.*, 1994) or *Molecular Cloning: A Laboratory Manual* (Sambrook *et al.*, 1989) for detailed protocols.

---

## What You Should See

If you digest genomic DNA from your transfectants with *Hind* III and use a *lacZ* fragment as a probe in your Southern analysis, you should be able to easily distinguish between single and multiple FRT integrants.

DNA from single integrants should contain only one hybridizing band corresponding to a single copy of the integrated pFRT/*lacZeo* plasmid.

DNA from multiple integrants should contain more than one hybridizing band. If the pFRT/*lacZeo* plasmid integrates into multiple chromosomal locations, the bands may be of varying sizes.

---

## Assay for β-Galactosidase Activity

Once you have identified single integrants, proceed to screen the clones for β-galactosidase expression. You may assay for β-galactosidase expression by activity assay using cell-free lysates (Miller, 1972) or by staining the cells for activity. Invitrogen offers the β-Gal Assay Kit (Catalog no. K1455-01) and the β-Gal Staining Kit (Catalog no. K1465-01) for fast and easy detection of β-galactosidase expression. Select those clones expressing the highest levels of β-galactosidase (if desired) to use as the host cell lines for your pcDNA5/FRT expression construct.

---

# Generating Stable Flp-In™ Expression Cell Lines

## Introduction

Once you have established your Flp-In™ host cell line, you may cotransfect your pcDNA5/FRT construct and the pOG44 expression plasmid into the host cell line to generate a stable Flp-In™ expression cell line. Integration of the pcDNA5/FRT construct into the genome will occur at the FRT site in the Flp-In™ host cells. The pcDNA5/FRT plasmid contains the hygromycin resistance gene to allow selection of stable cell lines (see **Important** note below). For more information about the pcDNA5/FRT plasmid and generating the pcDNA5/FRT expression construct, refer to the vector manual. For more information about the pOG44 plasmid, see below.



**Important**

The hygromycin resistance gene in the pcDNA5/FRT vector lacks an ATG initiation codon and a promoter to drive expression of the gene. Transfection of pcDNA5/FRT plasmid alone into a Flp-In™ host cell line will **not** confer hygromycin resistance to the cells containing the plasmid. The ATG initiation codon and the SV40 promoter required for expression of the hygromycin resistance gene are brought into proximity and frame with the gene only through Flp recombinase-mediated recombination between the FRT sites in the pcDNA5/FRT plasmid and the Flp-In™ host cell line.



If you wish to express your gene of interest in one of the cell lines listed in the table below, you may want to use one of Invitrogen's Flp-In™ host cell lines. For more information, refer to our Web site ([www.invitrogen.com](http://www.invitrogen.com)) or call Technical Service (see page 26).

Cell Line	Source	Catalog no.
Flp-In™-293	Human embryonic kidney	R750-07
Flp-In™-CV-1	African Green Monkey kidney	R752-07
Flp-In™-CHO	Chinese Hamster ovary	R758-07
Flp-In™-BHK	Baby hamster kidney	R760-07
Flp-In™-3T3	Mouse (NIH Swiss) embryonic fibroblast	R761-07
Flp-In™-Jurkat	Human T-cell leukemia	R762-07

**Note:** If you are generating Flp-In™ expression cell lines using the Flp-In™-3T3 or Flp-In™-BHK cell line, we recommend that you clone your gene of interest into a pEF5/FRT-based expression plasmid (*e.g.* pEF5/FRT/V5-D-TOPO® or pEF5/FRT/V5-DEST). We have observed down-regulation of the viral CMV promoter and subsequent loss of gene expression when pcDNA5/FRT-based expression constructs are introduced into Flp-In™-3T3 or Flp-In™-BHK cells.

## pOG44 Plasmid

You will cotransfect the pOG44 plasmid and your pcDNA5/FRT construct into your Flp-In™ host cell line to generate stable cell lines that express your protein of interest. Cotransfection of pOG44 and pcDNA5/FRT allows expression of Flp recombinase and integration of the pcDNA5/FRT plasmid into the genome via the FRT sites. Once the pcDNA5/FRT construct has integrated into the genome, the Flp recombinase is no longer required. In fact, the continued presence of Flp recombinase would be detrimental to the cells because it could mediate excision of your pcDNA5/FRT construct.

The pOG44 plasmid lacks an antibiotic resistance marker for selection in mammalian cells. Thus, the plasmid and therefore, Flp recombinase expression, will gradually be lost from transfected cells as they are cultured and selected in hygromycin.

*continued on next page*

# Generating Stable Flp-In™ Expression Cell Lines, continued

---

## Flp Recombinase

The *FLP* gene was originally isolated from the *Saccharomyces cerevisiae* 2 plasmid (Broach *et al.*, 1982; Broach and Hicks, 1980) (see the **Appendix**, page 24 for more information). When tested in mammalian cells, the Flp recombinase has been shown to possess optimum recombination activity near 30°C and relatively low activity at 37°C, a result consistent with its physiological role in yeast (Buchholz *et al.*, 1996).

The *FLP* gene in pOG44 is further limited in its activity because it contains a point mutation that encodes a Flp recombinase with a phenylalanine to leucine amino acid substitution at position 70 (Buchholz *et al.*, 1996). The resulting Flp recombinase (flp-F70L) exhibits increased thermolability at 37°C in mammalian cells when compared to the native Flp recombinase (Buchholz *et al.*, 1996). Studies have shown that the Flp recombinase expressed from pOG44 possesses only 10% of the activity at 37°C of the native Flp recombinase (Buchholz *et al.*, 1996).

---



### Important

When generating Flp-In™ expression cell lines, it is important to remember that you are selecting for a relatively rare recombination event since you want recombination and integration of your pcDNA5/FRT construct to occur only through the FRT site and for a limited time. In this case, using a highly inefficient Flp recombinase is beneficial and may decrease the occurrence of other undesirable recombination events.

---



### Note

**Reminder:** Integration of the pcDNA5/FRT construct into the genome via the FRT sites will result in the following events (see page 3 for a diagram):

- Insertion of the hygromycin resistance gene downstream of the SV40 early promoter and the ATG initiation codon (provided by pFRT/*lacZeo*)

- Insertion of the plasmid containing the CMV promoter, your gene of interest, and the BGH polyadenylation signal upstream of the *lacZ-Zeocin*™ fusion gene

- Disruption of the functional *lacZ-Zeocin*™ transcriptional unit caused by loss of the SV40 early promoter and the ATG initiation codon and insertion of the cassette containing the CMV promoter, gene of interest, and the BGH polyadenylation signal

As a result, your Flp-In™ expression cell lines should exhibit the following phenotype:

- Hygromycin resistance

- Zeocin*™ sensitivity

- Lack of β-galactosidase activity

- Expression of the gene of interest

---

## Positive Control

The pcDNA5/FRT/CAT plasmid is provided as a positive control vector for mammalian cell transfection and expression and may be used to assay for expression levels in your Flp-In™ expression cell line. If you have several different Flp-In™ host cell lines (cell lines containing FRT sites integrated at different genomic loci), you may want to use the pcDNA5/FRT/CAT control vector to compare protein expression levels from the various genomic loci. For more information about pcDNA5/FRT/CAT, refer to the pcDNA5/FRT vector manual.

---

*continued on next page*

# Generating Stable Flp-In™ Expression Cell Lines, continued

---

## Hygromycin B

The pcDNA5/FRT vector contains the *E. coli* hygromycin resistance gene (*HPH*) (Gritz and Davies, 1983) for selection of transfectants with the antibiotic, hygromycin B (Palmer *et al.*, 1987). When added to cultured mammalian cells, hygromycin B acts as an aminocyclitol to inhibit protein synthesis by disrupting translocation and promoting mistranslation. Hygromycin B liquid is supplied with the Flp-In™ Complete System and is also available separately from Invitrogen (see page vii for ordering information).

---



Hygromycin B is light sensitive. Store the liquid stock solution at +4°C protected from exposure to light.

Hygromycin B is toxic. Do not ingest solutions containing the drug.

Wear gloves, a laboratory coat, and safety glasses or goggles when handling hygromycin B and hygromycin B-containing solutions.

---

## Preparing and Storing Hygromycin B

The hygromycin B included with the Flp-In™ Complete System is supplied as a 100 mg/ml stock solution in autoclaved, deionized water and is filter-sterilized. The solution is brown in color. The stability of hygromycin B is guaranteed for six months, if stored at +4°C. Medium containing hygromycin is stable for up to six weeks.

---

## Determination of Hygromycin Sensitivity

To successfully generate a stable cell line expressing your gene of interest from pcDNA5/FRT, you need to determine the minimum concentration of hygromycin B required to kill your untransfected Flp-In™ host cell line. Typically, concentrations ranging from 10 to 400 g/ml hygromycin B are sufficient to kill most untransfected mammalian cell lines. We recommend that you test a range of concentrations (see protocol below) to ensure that you determine the minimum concentration necessary for your Flp-In™ host cell line.

1. Plate or split a confluent plate so the cells will be approximately 25% confluent. Prepare a set of 7 plates. Allow cells to adhere overnight.
  2. The next day, substitute culture medium with medium containing varying concentrations of hygromycin B ( 0, 10, 50, 100, 200, 400, 600 g/ml hygromycin B).
  3. Replenish the selective media every 3-4 days, and observe the percentage of surviving cells.
  4. Note the percentage of surviving cells at regular intervals to determine the appropriate concentration of hygromycin that kills the cells within 1-2 weeks after addition of hygromycin.
- 



Because correct integration of your pcDNA5/FRT construct into the genome is dependent on Flp recombinase, the expression levels of Flp recombinase in the cell will determine the efficiency of the recombination reaction. Flp recombinase levels must be sufficiently high to mediate recombination at the FRT sites (single recombination event) and overcome the low intrinsic activity of the enzyme (see previous page). We have varied the ratio of pOG44 and pcDNA5/FRT expression plasmid that we cotransfect into mammalian Flp-In™ host cells to optimize the recombination efficiency. **We recommend that you cotransfect your Flp-In™ host cell line with a ratio of at least 9:1 (w/w) pOG44:pcDNA5/FRT expression plasmid.** Note that this ratio may vary depending on the nature of the cell line. You may want to determine this ratio empirically for your cell line.

---

*continued on next page*



## Generating Stable Flp-In™ Expression Cell Lines, continued

---



### Important

When transfecting your Flp-In™ host cell line, be sure to use supercoiled pOG44 and pcDNA5/FRT plasmid DNA. Flp-mediated recombination between the FRT site on pcDNA5/FRT and the integrated FRT site in the Flp-In™ host cell line will only occur if the pcDNA5/FRT plasmid is circularized. The pOG44 plasmid should be circularized to minimize the possibility of the plasmid integrating into the genome.

---



### Note

Your gene of interest will be expressed from pcDNA5/FRT under the control of the human CMV promoter. Once you have generated the Flp-In™ expression cell line, note that your recombinant protein should be expressed constitutively.

---

### Selection of Stable Flp-In™ Expression Cell Lines

Once you have determined the appropriate hygromycin concentration to use for selection in your Flp-In™ host cell line, you can generate a stable cell line expressing your pcDNA5/FRT construct. **Reminder: Following cotransfection, your Flp-In™ expression clones should become sensitive to Zeocin™ (see Note on page 15); therefore, your selection medium should not contain Zeocin™.**

1. Cotransfect your mammalian Flp-In™ host cells with a 9:1 ratio of pOG44:pcDNA5/FRT plasmid DNA (see previous page) using the desired protocol. Remember to include a plate of untransfected cells as a negative control and the pcDNA5/FRT/CAT plasmid as a positive control.
  2. 24 hours after transfection, wash the cells and add fresh medium to the cells.
  3. 48 hours after transfection, split the cells into fresh medium. Split the cells such that they are no more than 25% confluent. If the cells are too dense, the antibiotic will not kill the cells. Antibiotics work best on actively dividing cells.
  4. Incubate the cells at 37°C for 2-3 hours until they have attached to the culture dish.
  5. Remove the medium and add fresh medium containing hygromycin at the pre-determined concentration required for your cell line.
  6. Feed the cells with selective medium every 3-4 days until foci can be identified.
  7. Pick 5-20 hygromycin-resistant foci and expand the cells. Verify that the pcDNA5/FRT construct has integrated into the FRT site by testing each clone for Zeocin™ sensitivity and lack of β-galactosidase activity.
  8. Select those clones that are hygromycin-resistant, Zeocin™-sensitive, and LacZ<sup>-</sup>, and assay for expression of your gene of interest.
- 

### Polyclonal Selection

If you use a single integrant as your Flp-In™ host cell line, all of the hygromycin-resistant foci that you obtain after cotransfection of pcDNA5/FRT and pOG44 and selection with hygromycin should, in theory, be isogenic (*i.e.* pcDNA5/FRT should integrate into the same genomic locus in every clone, therefore, all clones should be identical). Having isogenic clones should allow you to perform “polyclonal” selection and screening of your hygromycin-resistant cells. If you wish, you do not need to pick and screen separate foci for expression of your protein of interest. After hygromycin selection, simply pool the foci and screen the entire population of cells for expression of your protein of interest.

---

*continued on next page*

## Generating Stable Flp-In™ Expression Cell Lines, continued

---

### **Assay for CAT Protein**

The CAT protein expressed from the pcDNA5/FRT/CAT control plasmid is approximately 32 kDa in size. You may assay for CAT expression using your method of choice. For Western blot analysis, you may use CAT Antiserum available from Invitrogen for detection (see page vii for ordering information). Other commercial kits are available for assaying CAT expression

---

# Appendix

## Recipes

---

### LB (Luria-Bertani) Medium and Plates

#### Composition:

10 g Tryptone  
5 g Yeast Extract  
10 g NaCl  
pH 7.0

1. Combine the dry reagents above and add deionized, distilled water to 950 ml.
2. Adjust the pH of the solution to 7.0 with NaOH and bring the volume up to 1 liter.
3. Autoclave on liquid cycle for 20 minutes at 15 psi. Allow solution to cool to 55°C and add antibiotic if needed.
4. Store at room temperature or at +4°C.

#### LB agar plates

1. Prepare LB medium as above, but add 15 g/L agar before autoclaving.
  2. Autoclave on liquid cycle for 20 minutes at 15 psi.
  3. After autoclaving, cool to ~55°C, add antibiotic (*i.e.* 50-100 g/ml of ampicillin), and pour into 10 cm plates.
  4. Let harden, then invert and store at +4°C, in the dark.
- 

### Phosphate- Buffered Saline (PBS)

137 mM NaCl  
2.7 mM KCl  
10 mM Na<sub>2</sub>HPO<sub>4</sub>  
1.8 mM KH<sub>2</sub>PO<sub>4</sub>

1. Dissolve the following in 800 ml of deionized water:
    - 8 g NaCl
    - 0.2 g KCl
    - 1.44 g Na<sub>2</sub>HPO<sub>4</sub>
    - 0.24 g KH<sub>2</sub>PO<sub>4</sub>
  2. Adjust pH to 7.4 with concentrated HCl.
  3. Bring the volume to 1 liter and autoclave for 20 minutes on liquid cycle.
  4. Store at room temperature or at +4°C.
-

# Zeocin™

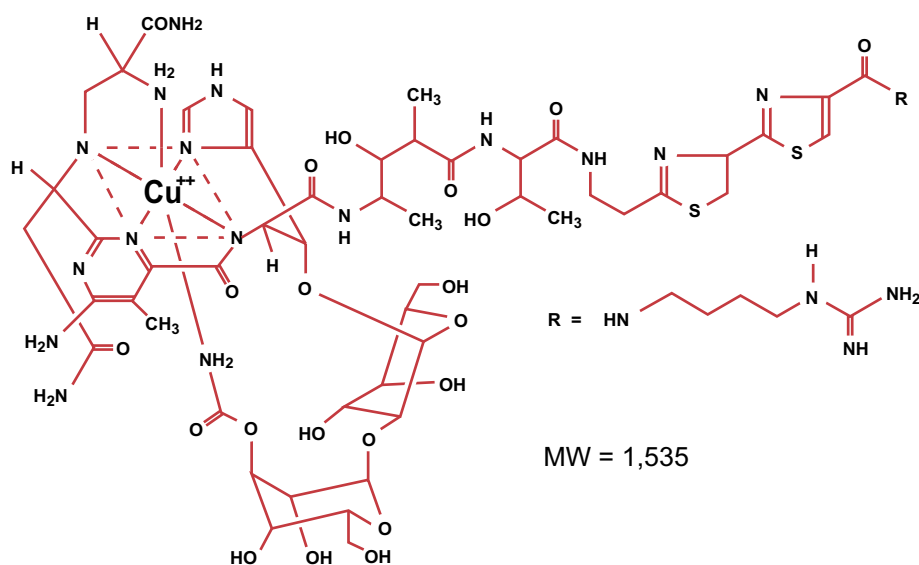
## Zeocin™

Zeocin™ is a member of the bleomycin/phleomycin family of antibiotics isolated from *Streptomyces*. Antibiotics in this family are broad spectrum antibiotics that act as strong anti-bacterial and anti-tumor drugs. They show strong toxicity against bacteria, fungi (including yeast), plants, and mammalian cells (Baron *et al.*, 1992; Drocourt *et al.*, 1990; Mulsant *et al.*, 1988; Perez *et al.*, 1989).

The Zeocin™ resistance protein has been isolated and characterized (Calmels *et al.*, 1991; Drocourt *et al.*, 1990). This protein, the product of the *Sh ble* gene (*Streptoalloteichus hindustanus* bleomycin gene), is a 13.7 kDa protein that binds Zeocin™ and inhibits its DNA strand cleavage activity. Expression of this protein in eukaryotic and prokaryotic hosts confers resistance to Zeocin™.

## Molecular Weight, Formula, and Structure

The formula for Zeocin™ is  $C_{60}H_{89}N_{21}O_{21}S_3$  and the molecular weight is 1,535. The diagram below shows the structure of Zeocin™.



## Applications of Zeocin™

Zeocin™ is used for selection in mammalian cells (Mulsant *et al.*, 1988); plants (Perez *et al.*, 1989); yeast (Baron *et al.*, 1992); and prokaryotes (Drocourt *et al.*, 1990). Typically, Zeocin™ concentrations ranging from 50 to 1000  $\mu$ g/ml are used for selection in mammalian cells. Before transfection, we recommend that you first test the sensitivity of your mammalian host cell to Zeocin™ as natural resistance varies among cell lines.

*continued on next page*

# Zeocin™, continued

---

## Handling Zeocin™

Store Zeocin™ at -20°C and thaw on ice before use.

Zeocin™ is light sensitive. Store drug, plates, and medium containing drug in the dark.

Wear gloves, a laboratory coat, and safety glasses or goggles when handling solutions containing Zeocin™.

Zeocin™ is toxic. Do not ingest or inhale solutions containing the drug.

---

## Ordering Information

Zeocin™ can be purchased from Invitrogen. For your convenience, the drug is prepared in autoclaved, deionized water and available in 1.25 ml aliquots at a concentration of 100 mg/ml. The stability of Zeocin™ is guaranteed for six months, if stored at -20°C.

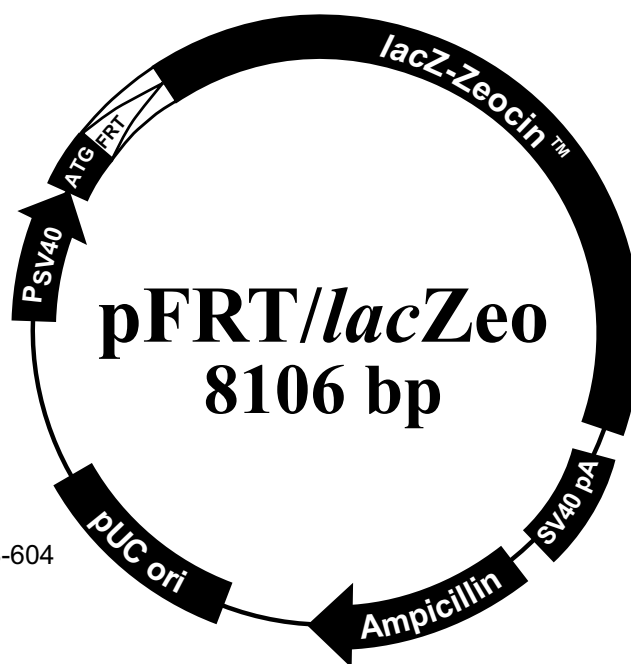
Amount	Catalog no.
1 gram	R250-01
5 grams	R250-05

---

## pFRT/lacZeo Vector

### Map of pFRT/lacZeo

pFRT/lacZeo is a 8106 bp vector that expresses a fusion protein containing  $\beta$ -galactosidase and the Zeocin<sup>TM</sup> resistance marker under the control of SV40 early promoter. Note that neither the *lacZ* gene nor the Zeocin<sup>TM</sup> resistance gene contains its native ATG initiation codon. The ATG initiation codon is placed directly upstream of a FRT site and allows expression of the *lacZ-Zeocin*<sup>TM</sup> fusion gene in cells. The figure below summarizes the features of the pFRT/lacZeo. **The complete sequence for pFRT/lacZeo is available for downloading from our World Wide Web site ([www.invitrogen.com](http://www.invitrogen.com)) or by contacting Technical Service (see page 26).**



#### Comments for pFRT/lacZeo 8106 nucleotides

SV40 early promoter and origin: bases 278-604

ATG initiation codon: bases 609-611

FRT site: bases 614-661

*lacZ-Zeocin*<sup>TM</sup> fusion gene

    LacZ ORF (no ATG): bases 675-3722

    Zeocin<sup>TM</sup> resistance gene (no ATG): bases 3810-4181

SV40 early polyadenylation signal: bases 5102-5425

*bla* promoter: bases 6201-6299

Ampicillin (*bla*) resistance gene: bases 6300-7160

pUC origin: bases 7305-7978

*continued on next page*

## pFRT//lacZeo Vector, continued

### Features of pFRT//lacZeo

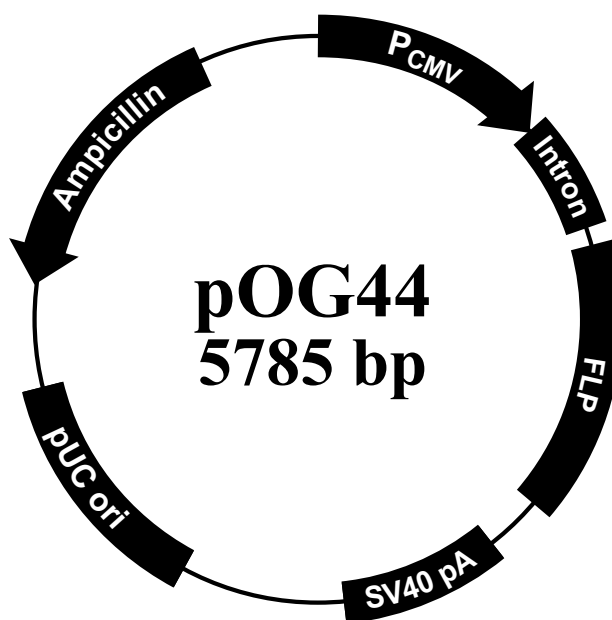
The table below describes the relevant features of pFRT//lacZeo. All features have been functionally tested.

Feature	Benefit
SV40 early promoter and origin	Permits efficient, high-level expression of the <i>lacZ-Zeocin</i> <sup>™</sup> fusion gene in mammalian cells and episomal replication in cells expressing the SV40 large T antigen
ATG initiation codon	Allows translation initiation of the LacZ-Zeocin <sup>™</sup> fusion protein
Flp Recombination Target (FRT) site	Encodes a 34 bp (+14 bp non-essential) sequence that serves as the binding and cleavage site for Flp recombinase (Gronostajski and Sadowski, 1985; Jayaram, 1985; Senecoff <i>et al.</i> , 1985)
<i>lacZ-Zeocin</i> <sup>™</sup> fusion gene	Encodes a fusion protein containing $\beta$ -galactosidase and the Zeocin <sup>™</sup> resistance marker to permit selection of stable mammalian cell lines with Zeocin <sup>™</sup> and screening by $\beta$ -galactosidase activity assay
SV40 early polyadenylation signal	Allows efficient transcription termination and polyadenylation of mRNA
<i>bla</i> promoter	Allows expression of the ampicillin ( <i>bla</i> ) resistance gene
Ampicillin ( <i>bla</i> ) resistance gene ( $\beta$ -lactamase)	Allows selection of transformants in <i>E. coli</i>
pUC origin	Permits high-copy number replication and growth in <i>E. coli</i>

## pOG44 Vector

### Map of pOG44

pOG44 is a 5785 bp vector that expresses the Flp recombinase under the control of the human CMV promoter as previously described (O'Gorman *et al.*, 1991). The vector contains a synthetic intron to enhance expression of the *FLP* gene. Note that the vector does not contain an antibiotic resistance marker to allow stable selection in mammalian cells. The figure below summarizes the features of the pOG44 vector. **The complete sequence for pOG44 is available for downloading from our World Wide Web site ([www.invitrogen.com](http://www.invitrogen.com)) or by contacting Technical Service (see page 26).**



### Comments for pOG44 5785 nucleotides

CMV promoter: bases 234-821

Synthetic intron: bases 871-1175

FLP ORF: bases 1202-2473

SV40 late polyadenylation signal: bases 2597-2732

pUC origin: bases 3327-3993 (complementary strand)

*bla* promoter: bases 4999-5097 (complementary strand)

Ampicillin (*bla*) resistance gene: bases 4138-4998 (complementary strand)

### FLP Gene

The *FLP* gene was originally isolated from the *Saccharomyces cerevisiae* 2 plasmid (Broach *et al.*, 1982; Broach and Hicks, 1980) and encodes a site-specific recombinase that is a member of the integrase family of recombinases (Argos *et al.*, 1986). The Flp recombinase mediates a site-specific recombination reaction between interacting DNA molecules via the pairing of interacting FRT sites. For more information about site-specific recombination, refer to page 4 and published reviews (Craig, 1988; Sauer, 1994).

The native *FLP* gene encodes a protein of 423 amino acids with a calculated molecular weight of 49 kDa. The *FLP* gene expressed from pOG44 encodes a temperature-sensitive Flp recombinase which carries a point mutation (flp-F70L) that results in a change in amino acid 70 from phenylalanine to leucine (Buchholz *et al.*, 1996). For more information about the properties of the flp-F70L protein, refer to page 15 and Buchholz *et al.*, 1996.

*continued on next page*



## pOG44 Vector, continued

**Features of pOG44** The table below describes the relevant features of pOG44. All features have been functionally tested.

<b>Feature</b>	<b>Benefit</b>
Human cytomegalovirus (CMV) immediate early promoter	Permits high-level expression of the <i>FLP</i> gene (Andersson <i>et al.</i> , 1989; Boshart <i>et al.</i> , 1985; Nelson <i>et al.</i> , 1987)
Synthetic intron	Hybrid fragment which contains sequences derived from the adenovirus major late region and an IgG variable region (Huang and Gorman, 1990; O'Gorman <i>et al.</i> , 1991) and functions to enhance expression of the <i>FLP</i> gene
<i>FLP</i> ORF	Encodes a temperature-sensitive Flp recombinase (Buchholz <i>et al.</i> , 1996) that mediates conservative recombination via FRT sites (O'Gorman <i>et al.</i> , 1991)
SV40 late polyadenylation signal	Permits efficient transcription termination and polyadenylation of mRNA
pUC origin	Permits high-copy number replication and growth in <i>E. coli</i>
<i>bla</i> promoter	Allows expression of the ampicillin ( <i>bla</i> ) resistance gene
Ampicillin ( <i>bla</i> ) resistance gene ( $\beta$ -lactamase)	Allows selection of transformants in <i>E. coli</i>

# Technical Service

---

## World Wide Web



Visit the Invitrogen Web Resource using your World Wide Web browser. At the site, you can:

Get the scoop on our hot new products and special product offers

View and download vector maps and sequences

Download manuals in Adobe® Acrobat® (PDF) format

Explore our catalog with full color graphics

Obtain citations for Invitrogen products

Request catalog and product literature

Once connected to the Internet, launch your Web browser (Internet Explorer 5.0 or newer or Netscape 4.0 or newer), then enter the following location (or URL):

**<http://www.invitrogen.com>**

...and the program will connect directly. Click on underlined text or outlined graphics to explore. Don't forget to put a bookmark at our site for easy reference!

---

## Contact Us

For more information or technical assistance, please call, write, fax, or email. Additional international offices are listed on our Web page ([www.invitrogen.com](http://www.invitrogen.com)).

### United States Headquarters:

Invitrogen Corporation  
1600 Faraday Avenue  
Carlsbad, CA 92008 USA  
Tel: 1 760 603 7200  
Tel (Toll Free): 1 800 955 6288  
Fax: 1 760 602 6500  
E-mail:  
[tech\\_service@invitrogen.com](mailto:tech_service@invitrogen.com)

### Japanese Headquarters

Invitrogen Japan K.K.  
Nihonbashi Hama-Cho Park Bldg. 4F  
2-35-4, Hama-Cho, Nihonbashi  
Tel: 81 3 3663 7972  
Fax: 81 3 3663 8242  
E-mail: [jpinfo@invitrogen.com](mailto:jpinfo@invitrogen.com)

### European Headquarters:

Invitrogen Ltd  
3 Fountain Drive  
Inchinnan Business Park  
Paisley PA4 9RF, UK  
Tel (Free Phone Orders): 0800 269 210  
Tel (General Enquiries): 0800 5345 5345  
Fax: +44 (0) 141 814 6287  
E-mail: [eurotech@invitrogen.com](mailto:eurotech@invitrogen.com)

---

## MSDS Requests

To request an MSDS, please visit our Web site ([www.invitrogen.com](http://www.invitrogen.com)) and follow the instructions below.

1. On the home page, go to the left-hand column under 'Technical Resources' and select 'MSDS Requests'.
  2. Follow instructions on the page and fill out all the required fields.
  3. To request additional MSDSs, click the 'Add Another' button.
  4. All requests will be faxed unless another method is selected.
  5. When you are finished entering information, click the 'Submit' button. Your MSDS will be sent within 24 hours.
- 

*continued on next page*

## Technical Service, continued

---

### Emergency Information

In the event of an emergency, customers of Invitrogen can call the 3E Company, 24 hours a day, 7 days a week for disposal or spill information. The 3E Company can also connect the customer with poison control or with the University of California at San Diego Medical Center doctors.

3E Company  
Voice: 1-760-602-8700

---

### Limited Warranty

Invitrogen is committed to providing our customers with high-quality goods and services. Our goal is to ensure that every customer is 100% satisfied with our products and our service. If you should have any questions or concerns about an Invitrogen product or service, please contact our Technical Service Representatives.

Invitrogen warrants that all of its products will perform according to the specifications stated on the certificate of analysis. The company will replace, free of charge, any product that does not meet those specifications. This warranty limits Invitrogen Corporation's liability only to the cost of the product. No warranty is granted for products beyond their listed expiration date. No warranty is applicable unless all product components are stored in accordance with instructions. Invitrogen reserves the right to select the method(s) used to analyze a product unless Invitrogen agrees to a specified method in writing prior to acceptance of the order.

Invitrogen makes every effort to ensure the accuracy of its publications, but realizes that the occasional typographical or other error is inevitable. Therefore Invitrogen makes no warranty of any kind regarding the contents of any publications or documentation. If you discover an error in any of our publications, please report it to our Technical Service Representatives.

**Invitrogen assumes no responsibility or liability for any special, incidental, indirect or consequential loss or damage whatsoever. The above limited warranty is sole and exclusive. No other warranty is made, whether expressed or implied, including any warranty of merchantability or fitness for a particular purpose.**

---

# Purchaser Notification

---

## Introduction

Use of the Flp-In™ System and its components (“System”) is covered under a number of different licenses including those detailed below.

---

## The Nature of the Invitrogen License for the Flp-In™ System

Invitrogen Corporation (“Invitrogen”) has a license to sell the System to scientists **for research purposes only**, under the terms described below. Use of the System for any Commercial Purpose (as defined below) requires the user to obtain commercial licenses as detailed below. Note that each such license would cover only one part of the System. Before using the System, please read the terms and conditions set forth below. Your use of the System shall constitute acknowledgment and acceptance of these terms and conditions. If you do not wish to use the System pursuant to these terms and conditions, please contact Invitrogen’s Technical Services within 10 days to return the unused and unopened System for a full credit. Otherwise, please complete the Product User Registration Card and return it to Invitrogen.

---

## Terms and Conditions

Invitrogen grants you a non-exclusive license to use the enclosed System for research purposes only. The System is being transferred to you in furtherance of, and reliance on, such license. You may not use the System, or the materials contained therein, for any Commercial Purpose without licenses for such purpose.

---

## Definition of Commercial Purpose

Commercial Purpose includes:

- any use of the System or Expression Products in a Commercial Product;
- any use of the System or Expression Products in the manufacture of a Commercial Product;
- any sale of the System or Expression Products;
- any use of the System or Expression Products to facilitate or advance research or development of a Commercial Product; and
- any use of the System or Expression Products to facilitate or advance any research or development program the results of which will be applied to the development of a Commercial Product.

“Expression Products” means products expressed with the System, or with the use of any vectors or host strains in the System. “Commercial Product” means any product intended for sale or commercial use.

---

## Individual Responsibilities

Access to the System must be limited solely to those officers, employees and students of your entity who need access to perform the aforementioned research. Each such officer, employee and student must be informed of these terms and conditions and agree, in writing, to be bound by same. You may not distribute the System or the vectors or host strains contained in it to others. You may not transfer modified, altered, or original material from the System to a third party without written notification to, and written approval from Invitrogen. You may not assign, sub-license, rent, lease or otherwise transfer any of the rights or obligations set forth herein, except as expressly permitted by Invitrogen.

---

*continued on next page*

## Purchaser Notification, continued

---

**Governing Law** This license shall be governed in its interpretation and enforcement by the laws of the United States and California.

---

**FLP-Mediated Gene Modification** This product is licensed under U.S. Patent Nos. 5,654,182 and 5,677,177 and is **for research purposes only**. Inquiries about licensing for commercial or other uses should be directed to:

The Salk Institute for Biological Studies  
10010 North Torrey Pines Road  
La Jolla, CA 92037  
Attn.: Department of Intellectual Property and Technology Transfer  
Phone: 858-453-4100 ext 1275  
Fax: 858-450-0509  
Email: amueller@salk.edu

---

**Zeocin™** Zeocin™ is a trademark of CAYLA, Toulouse, France. For commercial license information, please contact:

Licensing Coordinator  
Invitrogen Corporation  
1600 Faraday Avenue  
Carlsbad, CA 92008  
Phone: 760-603-7200  
Fax: 760-602-6500

---

**CMV Promoter** Use of the CMV promoter is covered under U.S. Patent Nos. 5,168,062 and 5,385,839 owned and licensed by the University of Iowa Research Foundation and may be used **for research purposes only**. Commercial users must obtain a license to these patents directly from the University of Iowa Research Foundation. Inquiries for commercial use should be directed to:

Brenda Akins  
University of Iowa Research Foundation (UIRF)  
214 Technology Innovation Center  
Iowa City, IA 52242  
Phone: 319-335-4549

---

*continued on next page*

## Purchaser Notification, continued

---

### **BGH PolyA Sequence License**

The bovine growth hormone (BGH) polyadenylation sequence is licensed under U.S. Patent No. 5,122,458 for research purposes only. "Research purposes" means uses directed to the identification of useful recombinant proteins and the investigation of the recombinant expression of proteins, which uses shall in no event include any of the following:

- a. any use in humans of a CLAIMED DNA or CLAIMED CELL;
- b. any use in human of protein or other substance expressed or made at any stage of its production with the use of a CLAIMED DNA or a CLAIMED CELL;
- c. any use in which a CLAIMED DNA or CLAIMED CELL would be sold or transferred to another party other than Invitrogen, its AFFILIATE, or its SUBLICENSEE;
- d. any use in connection with the expression or production of a product intended for sale or commercial use; or
- e. any use for drug screening or drug development.

Inquiries for commercial use should be directed to:

Bennett Cohen, Ph.D.  
Research Corporation Technologies  
101 North Wilmot Road, Suite 600  
Tucson, AZ 85711-3335  
Tel: 1-520-748-4443  
Fax: 1-520-748-0025

---

### **Product User Registration Card**

Please complete and return the enclosed Product User Registration Card for each Flp-In™ System or component that you purchase. This will serve as a record of your purchase and registration will allow Invitrogen to provide you with critical product updates. The agreement outlined above becomes effective upon our receipt of your Product User Registration Card or 10 days following the sale of the Flp-In™ System or component to you. Use of the System at any time results in immediate obligation to the terms and conditions stated in this license agreement.

---

# Product Qualification

---

## Introduction

This section describes the criteria used to qualify the components of the Flp-In™ System.

---

## Vectors

Each vector is qualified by restriction enzyme digestion with specific restriction enzymes as listed below. Restriction digests must demonstrate the correct banding pattern when electrophoresed on an agarose gel (see below). For restriction enzymes used to qualify the pcDNA5/FRT expression vector and the pcDNA5/FRT/CAT control plasmid, please refer to the pcDNA5/FRT manual.

Vector	Restriction Enzymes	Expected Results (bp)
pFRT/lacZeo	<i>Kpn</i> I	No site
	<i>Xba</i> I	8106
pOG44	<i>Kpn</i> I	5438, 347
	<i>Xba</i> I	5785

---

## Primers

Sequencing primers are lot tested by automated DNA sequencing experiments.

---

## Hygromycin B

Hygromycin B is lot qualified by performing a kill curve experiment with S2 insect cells in *Drosophila* Expression System (DES™) Expression Medium. For information about the lot specific activity of hygromycin, please refer to the label on the bottle.

---

## Zeocin™

Zeocin™ is lot qualified by demonstrating that Low Salt LB media containing 25 g/ml Zeocin™ prevents growth of the *E. coli* strain, TOP10.

---

## References

---

- Andersson, S., Davis, D. L., Dahlbäck, H., Jörnvall, H., and Russell, D. W. (1989). Cloning, Structure, and Expression of the Mitochondrial Cytochrome P-450 Sterol 26-Hydroxylase, a Bile Acid Biosynthetic Enzyme. *J. Biol. Chem.* *264*, 8222-8229.
- Andrews, B. J., Proteau, G. A., Beatty, L. G., and Sadowski, P. D. (1985). The FLP Recombinase of the 2 Micron Circle DNA of Yeast: Interaction with its Target Sequences. *Cell* *40*, 795-803.
- Argos, P., Landy, A., Abremski, K., Egan, J. B., Ljungquist, E. H., Hoess, R. H., Kahn, M. L., Kalionis, B., Narayana, S. V. L., and Pierson, L. S. (1986). The Integrase Family of Site-Specific Recombinases: Regional Similarities and Global Diversity. *EMBO J.* *5*, 433-440.
- Ausubel, F. M., Brent, R., Kingston, R. E., Moore, D. D., Seidman, J. G., Smith, J. A., and Struhl, K. (1994). *Current Protocols in Molecular Biology* (New York: Greene Publishing Associates and Wiley-Interscience).
- Baron, M., Reynes, J. P., Stassi, D., and Tiraby, G. (1992). A Selectable Bifunctional  $\beta$ -Galactosidase: Phleomycin-resistance Fusion Protein as a Potential Marker for Eukaryotic Cells. *Gene* *114*, 239-243.
- Boshart, M., Weber, F., Jahn, G., Dorsch-Häsler, K., Fleckenstein, B., and Schaffner, W. (1985). A Very Strong Enhancer is Located Upstream of an Immediate Early Gene of Human Cytomegalovirus. *Cell* *41*, 521-530.
- Broach, J. R., Guarascio, V. R., and Jayaram, M. (1982). Recombination Within the Yeast Plasmid 2 $\mu$  Circle is Site-specific. *Cell* *29*, 227-234.
- Broach, J. R., and Hicks, J. B. (1980). Replication and Recombination Functions Associated with the Yeast Plasmid, 2  $\mu$  Circle. *Cell* *21*, 501-508.
- Buchholz, F., Ringrose, L., Angrand, P. O., Rossi, F., and Stewart, A. F. (1996). Different Thermostabilities of FLP and Cre Recombinases: Implications for Applied Site-specific Recombination. *Nuc. Acids Res.* *24*, 4256-4262.
- Calmels, T., Parriche, M., Burand, H., and Tiraby, G. (1991). High Efficiency Transformation of *Tolypocladium geodes* Conidiospores to Phleomycin Resistance. *Curr. Genet.* *20*, 309-314.
- Chen, C., and Okayama, H. (1987). High-Efficiency Transformation of Mammalian Cells by Plasmid DNA. *Mol. Cell. Biol.* *7*, 2745-2752.
- Chu, G., Hayakawa, H., and Berg, P. (1987). Electroporation for the Efficient Transfection of Mammalian Cells with DNA. *Nuc. Acids Res.* *15*, 1311-1326.
- Craig, N. L. (1988). The Mechanism of Conservative Site-Specific Recombination. *Ann. Rev. Genet.* *22*, 77-105.
- Drocourt, D., Calmels, T. P. G., Reynes, J. P., Baron, M., and Tiraby, G. (1990). Cassettes of the *Streptoalloteichus hindustanus ble* Gene for Transformation of Lower and Higher Eukaryotes to Phleomycin Resistance. *Nuc. Acids Res.* *18*, 4009.
- Felgner, P. L., Holm, M., and Chan, H. (1989). Cationic Liposome Mediated Transfection. *Proc. West. Pharmacol. Soc.* *32*, 115-121.
- Felgner, P. L., and Ringold, G. M. (1989). Cationic Liposome-Mediated Transfection. *Nature* *337*, 387-388.
- Graham, F. L., Smiley, J., Russell, W. C., and Nairn, R. (1977). Characteristics of a Human Cell Line Transformed by DNA from Human Adenovirus Type 5. *J. Gen. Virol.* *36*, 59-74.

---

*continued on next page*



## References, continued

---

- Gritz, L., and Davies, J. (1983). Plasmid-Encoded Hygromycin-B Resistance: The Sequence of Hygromycin-B-Phosphotransferase Gene and its Expression in *E. coli* and *S. cerevisiae*. *Gene* 25, 179-188.
- Gronostajski, R. M., and Sadowski, P. D. (1985). Determination of DNA Sequences Essential for FLP-mediated Recombination by a Novel Method. *J. Biol. Chem.* 260, 12320-12327.
- Huang, M. T. F., and Gorman, C. M. (1990). Intervening Sequences Increase Efficiency of RNA 3' Processing and Accumulation of Cytoplasmic RNA. *Nuc. Acids Res.* 18, 937-947.
- Jainchill, J. L., Aaronson, S. A., and Todaro, G. J. (1969). Murine Sarcoma and Leukemia Viruses: Assay Using Clonal Lines of Contact-Inhibited Mouse Cells. *J. Virol.* 4, 549-553.
- Jayaram, M. (1985). Two-micrometer Circle Site-specific Recombination: The Minimal Substrate and the Possible Role of Flanking Sequences. *Proc. Natl. Acad. Sci. USA* 82, 5875-5879.
- Kao, F. T., and Puck, T. T. (1968). Genetics of Somatic Mammalian Cells, VII. Induction and Isolation of Nutritional Mutants in Chinese Hamster Cells. *Proc. Natl. Acad. Sci. USA* 60, 1275-1281.
- Kit, S., Dubbs, D. R., DeTorres, R. A., and Melnick, J. L. (1965). Enhanced Thymidine Kinase Activity Following Infection of Green Monkey Kidney Cells by Simian Adenoviruses, Simian Papovavirus SV40, and an Adenovirus-SV40 "Hybrid". *Virology* 27, 453-457.
- Miller, J. H. (1972). *Experiments in Molecular Genetics* (Cold Spring Harbor, New York: Cold Spring Harbor Laboratory).
- Mulsant, P., Tiraby, G., Kallerhoff, J., and Perret, J. (1988). Phleomycin Resistance as a Dominant Selectable Marker in CHO Cells. *Somat. Cell Mol. Genet.* 14, 243-252.
- Nelson, J. A., Reynolds-Kohler, C., and Smith, B. A. (1987). Negative and Positive Regulation by a Short Segment in the 5'-Flanking Region of the Human Cytomegalovirus Major Immediate-Early Gene. *Mol. Cell. Biol.* 7, 4125-4129.
- Neumann, J. R., Morency, C. A., and Russian, K. O. (1987). A Novel Rapid Assay for Chloramphenicol Acetyltransferase Gene Expression. *BioTechniques* 5, 444-447.
- O'Gorman, S., Fox, D. T., and Wahl, G. M. (1991). Recombinase-Mediated Gene Activation and Site-Specific Integration in Mammalian Cells. *Science* 251, 1351-1355.
- Palmer, T. D., Hock, R. A., Osborne, W. R. A., and Miller, A. D. (1987). Efficient Retrovirus-Mediated Transfer and Expression of a Human Adenosine Deaminase Gene in Diploid Skin Fibroblasts from an Adenosine-Deficient Human. *Proc. Natl. Acad. Sci. U.S.A.* 84, 1055-1059.
- Perez, P., Tiraby, G., Kallerhoff, J., and Perret, J. (1989). Phleomycin Resistance as a Dominant Selectable Marker for Plant Cell Transformation. *Plant Mol. Biol.* 13, 365-373.
- Sambrook, J., Fritsch, E. F., and Maniatis, T. (1989). *Molecular Cloning: A Laboratory Manual*, Second Edition (Plainview, New York: Cold Spring Harbor Laboratory Press).
- Sauer, B. (1994). Site-Specific Recombination: Developments and Applications. *Curr. Opin. Biotechnol.* 5, 521-527.
- Senecoff, J. F., Bruckner, R. C., and Cox, M. M. (1985). The FLP Recombinase of the Yeast 2-micron Plasmid: Characterization of its Recombination Site. *Proc. Natl. Acad. Sci. USA* 82, 7270-7274.

---

*continued on next page*

## References, continued

---

Shigekawa, K., and Dower, W. J. (1988). Electroporation of Eukaryotes and Prokaryotes: A General Approach to the Introduction of Macromolecules into Cells. *BioTechniques* 6, 742-751.

Talavera, A., and Basilico, C. (1977). Temperature Sensitive Mutants of BHK Cells Affected in Cell Cycle Progression. *J. Cell. Physiol.* 92, 425-436.

Wigler, M., Silverstein, S., Lee, L.-S., Pellicer, A., Cheng, Y.-C., and Axel, R. (1977). Transfer of Purified Herpes Virus Thymidine Kinase Gene to Cultured Mouse Cells. *Cell* 11, 223-232.

---

©1999-2002 Invitrogen Corporation. All rights reserved.